

2026

Showdown[®]
DISPLAYS

BEST SELLERS



Sign Pro
signprofargo.com

2220 2nd Avenue East • West Fargo, ND 58078
(701) 461-7309

TABLE COVERS

28 Stock Throw Colors

WHITE *	CHERRY * PMS 1795	GRAPE PMS 268	NAVY BLUE * PMS 2767	BROWN PMS 476
LEMON *	RED PMS 201	PURPLE PMS VIOLET	LIME GREEN PMS 375	GRAY PMS 422
YELLOW PMS 1235	BURGUNDY PMS 504	AQUAMARINE PMS 2231	EMERALD * PMS 347	CHARCOAL PMS 425
MANGO PMS 1375	FLAMINGO PMS 1767	COBALT * PMS 7683	SHAMROCK PMS 361	BLACK *
ORANGE PMS 1505	HOT PINK PMS 219	BLUEBERRY PMS 647	HUNTER GREEN PMS 350	
PEACH PMS 162	MULBERRY PMS 683	ROYAL BLUE PMS 661	HAZELNUT PMS 7575	

PMS colors are for reference only and may vary slightly from actual color.
* indicates stock throw colors that closely align with our stock tent canopy colors.

when choosing a table throw
have you considered...

- How often will you be using your table cover?
- Does your throw need to cover all four sides of the table, or would you like an open back?
- Do you want a logo printed on the front, or would you like a full-color design that covers the entire throw?



LAZERLINE TABLE THROW



These cost-effective throws are laser-cut for a crisp finished edge.

- Available in full-color front only and full-color full-bleed
- Full-color front only features a large imprint area
- Heat-treated edges will not fray or unravel
- Available in 3-sided or 4-sided throw styles
- Polyester poplin
- Machine-washable and wrinkle-resistant
- Flame retardant certified for exhibit hall use

Full-Color Front Only

Item #	Description	1	2-5	6-11	12-24
108213	6' LazerLine 3-Sided Throw	129.20	124.10	117.60	111.10
108214	8' LazerLine 3-Sided Throw	143.40	137.70	130.50	123.30
108201	6' LazerLine 4-Sided Throw	143.40	137.70	130.50	123.30
108202	8' LazerLine 4-Sided Throw	157.60	151.30	143.40	135.50

Setup fee: \$20(G)

Pricing is subject to change.

Stock fabric colors with full-color artwork printed on front.
Artwork cannot exceed maximum size requirements.

USD MSRP (C)

Full-Color Full-Bleed

Item #	Description	1	2-5	6-11	12-24
108216	6' LazerLine 3-Sided Throw	129.20	124.10	117.60	111.10
108217	8' LazerLine 3-Sided Throw	143.40	137.70	130.50	123.30
108204	6' LazerLine 4-Sided Throw	143.40	137.70	130.50	123.30
108205	8' LazerLine 4-Sided Throw	157.60	151.30	143.40	135.50

Setup fee: \$20(G)

Pricing is subject to change.

White fabric fully dye sublimated with full-color artwork.

USD MSRP (C)

Description	Table Size	Finished Graphic Size	Product Wt. (3-Sided / 4-Sided)
6'	standard 6'W table	view online template	2 lbs. / 2.5 lbs.
8'	standard 8'W table	view online template	2.5 lbs. / 3 lbs.

Production Lead Time: 2 days from final proof approval



6' full-color full-bleed

Laser-cut edges for a clean look.

USER-FRIENDLY ICONS



Machine-Washable

This product's graphic is machine-washable on gentle cycle using mild detergent.



Outdoor Use

This product is suitable for outdoor use during mild weather conditions.



Made in the USA

This product is manufactured in the USA.



Product Warranty

This is the duration of the product warranty (see website for details).



Sustainable Product

One or more materials with a reduced environmental impact. Check your local recycling guidelines.



Wind Rating

Rated on the Beaufort Wind Rating. Wind ratings were determined utilizing all available securing/stabilizing options sold with or offered for the product.

PRICES ARE SUBJECT TO CHANGE. No setup fee on orders placed via our website. Visit showdowndisplays.com for current pricing, graphic templates, product videos and assembly instructions.

showdowndisplays.com

ECONOMY TABLE THROW



The open-back design of this throw gives you legroom and quick access to anything you store beneath the table.

- Available in full-color front only and full-color full-bleed
- Full-color front only features a large imprint area
- Draped corners
- Polyester poplin
- Machine-washable and wrinkle-resistant
- Flame retardant certified for exhibit hall use

Full-Color Front Only

Item #	Description	1	2-5	6-11	12-24
106002	6' Economy Throw	173.50	166.50	157.90	149.20
106014	8' Economy Throw	192.60	184.90	175.30	165.60

Setup fee: \$20(G) **Pricing is subject to change.**

Stock fabric colors with full-color artwork printed on front. USD MSRP (C)
Artwork cannot exceed maximum size requirements.

Full-Color Full-Bleed

Item #	Description	1	2-5	6-11	12-24
106010	6' Economy Throw	173.50	166.50	157.90	149.20
106022	8' Economy Throw	192.60	184.90	175.30	165.60

Setup fee: \$20(G) **Pricing is subject to change.**

White fabric fully dye sublimated with full-color artwork. USD MSRP (C)

Description	Table Size	Finished Graphic Size	Product Wt.
6'	standard 6'W table	view online template	2 lbs.
8'	standard 8'W table	view online template	2.5 lbs.

Production Lead Time: 2 days from final proof approval



8' full-color front only shown in gray

6' full-color full-bleed



Covers three sides of the table with a 9" overhang in back.



Underside of material is blank.

STANDARD TABLE THROW



Our most popular table throw is elegant in its simplicity.

- Covers four sides of the table, viewable from all sides
- Available in full-color front only and full-color full-bleed
- Full-color front only features a large imprint area
- Draped corners
- Polyester poplin
- Machine-washable and wrinkle-resistant
- Flame retardant certified for exhibit hall use

Full-Color Front Only

Item #	Description	1	2-5	6-11	12-24
109002	6' Standard Throw	192.60	184.90	175.30	165.60
109014	8' Standard Throw	211.50	203.10	192.50	181.90

Setup fee: \$20(G) **Pricing is subject to change.**

Stock fabric colors with full-color artwork printed on front. USD MSRP (C)
Artwork cannot exceed maximum size requirements.

Full-Color Full-Bleed

Item #	Description	1	2-5	6-11	12-24
109010	6' Standard Throw	192.60	184.90	175.30	165.60
109022	8' Standard Throw	211.50	203.10	192.50	181.90

Setup fee: \$20(G) **Pricing is subject to change.**

White fabric fully dye sublimated with full-color artwork. USD MSRP (C)

Description	Table Size	Finished Graphic Size	Product Wt.
6'	standard 6'W table	view online template	2.5 lbs.
8'	standard 8'W table	view online template	3 lbs.

Production Lead Time: 2 days from final proof approval



8' full-color full-bleed

6' full-color front only shown in royal blue



Keep your supplies and accessories out of sight.



Add-On

Table Throw Messenger Bag

Item #	1	2-5	6-11	12-24
220107	46.55	45.15	43.76	42.36

Pricing is subject to change.

USD MSRP (C)

Hardware Lead Time: Ships same day when ordered before 2 p.m. Central

TABLE COVERS



8' full-color full-bleed transforms into a 6' fitted



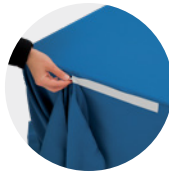
Hook-and-loop fasteners make size conversion quick and easy; available in black or white (see website for details).



Converts from 8' to 6' and Back Again!



1. Grab the back corner of the table throw.



2. Attach the corner to the back of the throw using the built-in hook-and-loop fasteners.



3. Grab the front corner of the throw and fold it tightly around the back corner of the table.



4. Secure it in place with the built-in hook-and-loop fasteners.

CONVERTIBLE TABLE THROW



This throw is convertible so it fits both 8' and 6' table sizes.

- Available in full-color front only and full-color full-bleed
- Full-color front only features a large imprint area
- Covers four sides of the table
- Polyester poplin
- Machine-washable and wrinkle-resistant
- Flame retardant certified for exhibit hall use

Full-Color Front Only

Item #	Description	1	2-5	6-11	12-24
104014	6'/8' Convertible Throw	324.00	281.75	265.75	243.00

Setup fee: \$20(G)

Pricing is subject to change.

Stock fabric colors with full-color artwork printed on front. USD MSRP (C)
Artwork cannot exceed maximum size requirements.

Full-Color Full-Bleed

Item #	Description	1	2-5	6-11	12-24
104022	6'/8' Convertible Throw	324.00	281.75	265.75	243.00

Setup fee: \$20(G)

Pricing is subject to change.

White fabric fully dye sublimated with full-color artwork. USD MSRP (C)

Table Size	Finished Graphic Size	Product Wt.
standard 6' or 8'W table	view online template	3 lbs.

Production Lead Time: 2 days from final proof approval

FITTED TABLE THROW



It's taut surfaces and sharp lines give it a tailored look that stands out at meetings, shows, career fairs and more.

- Tight, fitted look
- Available in full-color front only and full-color full-bleed
- Full-color front only features a large imprint area
- Covers four sides of the table
- Polyester poplin
- Machine-washable and wrinkle-resistant
- Flame retardant certified for exhibit hall use

Full-Color Front Only

Item #	Description	1	2-5	6-11	12-24
107002	6' Fitted Throw	282.00	245.40	231.30	211.50
107014	8' Fitted Throw	307.50	267.50	252.25	230.70

Setup fee: \$20(G)

Pricing is subject to change.

Stock fabric colors with full-color artwork printed on front. USD MSRP (C)
Artwork cannot exceed maximum size requirements.

Full-Color Full-Bleed

Item #	Description	1	2-5	6-11	12-24
107010	6' Fitted Throw	282.00	245.40	231.30	211.50
107022	8' Fitted Throw	307.50	267.50	252.25	230.70

Setup fee: \$20(G)

Pricing is subject to change.

White fabric fully dye sublimated with full-color artwork. USD MSRP (C)

Description	Table Size	Finished Graphic Size	Product Wt.
6'	standard 6'W table	view online template	2 lbs.
8'	standard 8'W table	view online template	2.5 lbs.

Production Lead Time: 3 days from final proof approval



8' full-color full-bleed

6' full-color front only shown in gray



PRICES ARE SUBJECT TO CHANGE. No setup fee on orders placed via our website. Visit showdowndisplays.com for current pricing, graphic templates, product videos and assembly instructions.

showdowndisplays.com

ULTRAFIT TABLE THROW



This form-fitting throw is an attractive option for promoting your brand. It stretches to fit tightly around tables, creating a crisp, refined appearance.

- Tight, form-fitting look
- Artwork is dye sublimated on two-way stretch fabric
- Machine-washable and wrinkle-resistant
- Flame retardant certified for exhibit hall use

UltraFit Table Throw

Item #	Description	1	2-5	6-11	12-24
114012	31.5" Bar-Height Full-Color Full-Bleed	353.50	339.25	321.50	304.00
114002	6' Classic Full-Color Full-Bleed	407.75	391.50	371.00	350.75
114005	8' Classic Full-Color Full-Bleed	452.75	434.75	412.00	389.50
114015	6' Curve Full-Color Full-Bleed	386.25	371.00	351.50	332.25
114018	8' Curve Full-Color Full-Bleed	428.75	411.75	390.25	368.75

Setup fee: \$20(G)

Pricing is subject to change.

White fabric fully dye sublimated with full-color artwork.

USD MSRP (C)

Description	Table Size	Full-Bleed Graphic Size	Product Wt.
31.5"	31.5"D bar-height table	view online template	1.75 lbs.
6'	standard 6'W table	view online template	2.25 - 2.5 lbs.
8'	standard 8'W table	view online template	2.75 - 3 lbs.

Production Lead Time: 4 days from final proof approval



Classic features a zippered back for an enclosed storage area.



Table leg slips into the sleeve to pull the throw taut.



back view

6' Curve

6' Classic

31.5" Bar-height

STANDARD TABLE RUNNER



This stylish runner lets you add a logo or design to any table.

- Available in full-color front only and full-color full-bleed
- Full-color front only features a large imprint area
- Available in two widths
- Polyester poplin
- Machine-washable and wrinkle-resistant
- Flame retardant certified for exhibit hall use
- Table throw sold separately

Full-Color Front Only

Item #	Description	1	2-5	6-11	12-24
102002	28" Standard Runner	166.50	144.80	136.50	124.80
102014	57" Standard Runner	205.80	179.10	168.80	154.40

Setup fee: \$20(G)

Pricing is subject to change.

Stock fabric colors with full-color artwork printed on front. Artwork cannot exceed maximum size requirements.

USD MSRP (C)

Full-Color Full-Bleed

Item #	Description	1	2-5	6-11	12-24
102010	28" Standard Runner	166.50	144.80	136.50	124.80
102022	57" Standard Runner	205.80	179.10	168.80	154.40

Setup fee: \$20(G)

Pricing is subject to change.

White fabric fully dye sublimated with full-color artwork.

USD MSRP (C)

Description	Finished Size	Finished Graphic Size	Product Wt.
28"	28"W x 80"D	view online template	0.5 lb.
57"	57"W x 80"D	view online template	1 lb.

Production Lead Time: 2 days from final proof approval



57" full-color front only shown in mango

28" full-color full-bleed



28 STOCK COLORS
SEE PAGE 2



PRICES ARE SUBJECT TO CHANGE. No setup fee on orders placed via our website. Visit showdowndisplays.com for current pricing, graphic templates, product videos and assembly instructions.

showdowndisplays.com

RETRACTABLE BANNERS

when choosing a retractable banner have you considered...

- Will your graphic be permanent, or will you be swapping it out frequently?
- How often will your retractor be set up and taken down?
- Do you want a single- or double-sided display?

IDEAL RETRACTOR



The Ideal Retractor is designed from the ground up to be a quick, simple solution for short-term promotional applications.

- Lightweight, portable base
- Artwork is printed on tear-resistant Titan™ polypropylene media
- Not eligible for Rush Service

Ideal Retractor

Item #	Description	1	2-5	6-11	12-24
261150	31.5" Kit	151.20	142.10	136.10	127.00
261153	33.5" Kit	165.80	155.90	149.20	139.30

Setup fee: \$20(G)

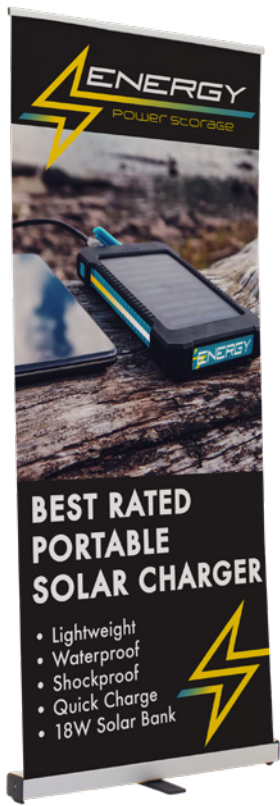
Pricing is subject to change.

Kit Includes: Hardware, Installed Graphic and Soft Carry Case

USD MSRP (C)

Description	Product Size	Finished Graphic Size	Product Wt.	Media
31.5"	32.25"W x 82.25"H x 10.25"D	view online template	4.6 lbs.	Titan™ polypropylene media
33.5"	34.25"W x 82.25"H x 10.25"D	view online template	5 lbs.	Titan™ polypropylene media

Production Lead Time: 1 day from final proof approval



33.5"



31.5"



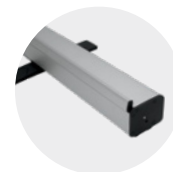
Plastic swivel foot for stability.



Banner rail easily attaches to the top of the pole for quick setup.



Three-section shock cord pole makes setup and teardown easy.



Lightweight aluminum base features plastic ends.



36"

33.5"

31.5"



Shock cord pole makes setup and teardown easy.



Lightweight aluminum base with plastic ends.

VALUE RETRACTOR



The Value Retractor is a cost-conscious option for your portable signage needs.

- Banner available in Titan™ polypropylene media
- Two swivel feet for stability
- Available in three widths

Value Retractor

Item #	Description	1	2-5	6-11	12-24
262240	31.5" Kit	184.80	177.40	168.20	159.00
262243	33.5" Kit	193.90	186.10	176.40	166.70
262246	36" Kit	196.60	188.70	178.90	169.00

Setup fee: \$20(G)

Pricing is subject to change.

Kit Includes: Hardware, Installed Graphic and Soft Carry Case

USD MSRP (C)

Description	Product Size	Finished Graphic Size	Product Wt.	Media
31.5"	34"W x 82"H x 15"D	view online template	7 lbs.	polypropylene media
33.5"	35.75"W x 82"H x 15"D	view online template	7.25 lbs.	polypropylene media
36"	38.5"W x 82"H x 15"D	view online template	7.6 lbs.	polypropylene media

Production Lead Time: 2 days from final proof approval

PRICES ARE SUBJECT TO CHANGE. No setup fee on orders placed via our website. Visit showdowndisplays.com for current pricing, graphic templates, product videos and assembly instructions.

showdowndisplays.com

ECONOMY RETRACTOR



The popular Economy Retractor is versatile and budget-friendly, making it a great option for the cost-conscious marketer.

- Banner available in Titan™ no-curl hybrid media, Titan™ no-curl opaque fabric or PVC-free silver backed media

Economy Retractor

Item #	Description	1	2-5	6-11	12-24
261134	31.5" No-Curl Hybrid Media Kit	290.25	278.50	264.00	249.60
262162	31.5" No-Curl Opaque Fabric Kit	290.25	278.50	264.00	249.60
261364	31.5" PVC-Free Silver Backed Media Kit	290.25	278.50	264.00	249.60
261136	33.5" No-Curl Hybrid Media Kit	300.75	288.75	273.50	258.50
262163	33.5" No-Curl Opaque Fabric Kit	300.75	288.75	273.50	258.50
261366	33.5" PVC-Free Silver Backed Media Kit	300.75	288.75	273.50	258.50
261138	36" No-Curl Hybrid Media Kit	335.75	322.50	305.50	288.75
262164	36" No-Curl Opaque Fabric Kit	335.75	322.50	305.50	288.75
261368	36" PVC-Free Silver Backed Media Kit	335.75	322.50	305.50	288.75

Setup fee: \$20(G)

Pricing is subject to change.

Kit Includes: Silver or Black Hardware, Installed Graphic and Soft Carry Case USD MSRP (C)

Description	Product Size	Finished Graphic Size	Product Wt.
31.5"	32"W x 83.5"H x 15"D	view online template	7 lbs.
33.5"	34"W x 83.5"H x 15"D	view online template	7.25 lbs.
36"	36.5"W x 83.5"H x 15"D	view online template	8.5 lbs.

Production Lead Time: 2 days from final proof approval

Add-On

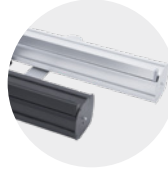


Ultimate LED Single Light Kit

Item #	Description	1	2-5	6-11	12-24
150120	Kit	199.50	193.50	187.50	181.50

Pricing is subject to change.
USD MSRP (C)

Hardware Lead Time: Ships same day when ordered before 2 p.m. Central



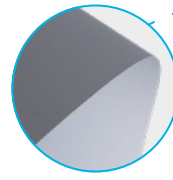
Lightweight, aluminum base is available in silver or black.



Two swivel feet for stability.



Banner rail easily attaches to the top of the pole for quick setup.



Our sustainable display option uses PVC-free media and includes the recyclable aluminum base.



31.5" with single light kit (sold separately)

ECONOMY PLUS RETRACTOR



This display elevates our popular Economy Retractor with improved durability and additional features.

- Available in two widths
- Single-footed design keeps the retractor stable while maintaining a low profile
- Flip-lever telescoping pole makes setup and adjustment simple
- Banner available in Titan™ no-curl hybrid media or dry-erase media

Economy Plus Retractor

Item #	Description	1	2-5	6-11	12-24
261012	31.5" No-Curl Hybrid Media Kit	361.75	340.25	325.75	304.00
262191	31.5" Dry-Erase Media Kit	361.75	340.25	325.75	304.00
261002	33.5" No-Curl Hybrid Media Kit	381.00	358.25	343.00	320.00
262192	33.5" Dry-Erase Media Kit	381.00	358.00	342.75	320.00

Setup fee: \$20(G)

Pricing is subject to change.

Kit Includes: Hardware, Installed Graphic and Soft Carry Case USD MSRP (C)

Description	Product Size	Finished Graphic Size	Product Wt.
31.5"	32"W x 64"-82.5"H x 15"D	view online template	7 lbs.
33.5"	34"W x 64"-82.5"H x 15"D	view online template	7.5 lbs.

Production Lead Time: 2 days from final proof approval



Dry-erase media lets you write out your message and wipe it away (markers not included).



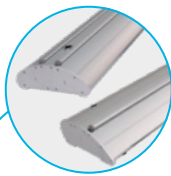
Hook-and-loop fasteners make banners easy to swap out.



RETRACTABLE BANNERS



Dry-erase media lets you write out your message and wipe it away (markers not included).



Streamlined base is available in single- and double-banner options.

DELUXE PRO RETRACTOR



This retractor features a curved base with durable aluminum end caps. Easily swapping out graphics with the hook-and-loop banner system.

- Banner available in Titan™ no-curl opaque fabric or dry-erase media
- Banner is printed single-sided; double-sided option includes two banners
- No-curl opaque fabric is not eligible for Rush Service

Deluxe Pro Retractor

Item #	Description	1	2-5	6-11	12-24
262250	33.5" Single No-Curl Opaque Fabric Kit	394.00	370.50	354.75	331.00
262251	33.5" Double No-Curl Opaque Fabric Kit	595.50	580.50	533.50	518.50
262202	33.5" Single Dry-Erase Media Kit	394.00	370.50	354.75	331.00
262203	33.5" Double Dry-Erase Media Kit	595.50	580.50	533.50	518.50
262254	46.5" Single No-Curl Opaque Fabric Kit	528.00	496.50	475.50	443.75
262255	46.5" Double No-Curl Opaque Fabric Kit	779.50	758.50	699.00	677.50
262204	46.5" Single Dry-Erase Media Kit	528.00	496.50	475.50	443.75
262205	46.5" Double Dry-Erase Media Kit	779.50	758.50	699.00	677.50

Setup fee: \$20(G)

Kit Includes: Hardware, Installed Graphic(s) and Soft Carry Case

Pricing is subject to change.

USD MSRP (C)

Description	Product Size (Single / Double)	Finished Graphic Size	Product Wt. (Single / Double)
33.5"	34.75"W x 65.25"-83.25"H x 8.5"D / 9.25"D	view online template	12.25 lbs. / 16 lbs.
46.5"	48.5"W x 65.25"-83.25"H x 8.5"D / 9.25"D	view online template	16.75 lbs. / 22.5 lbs.

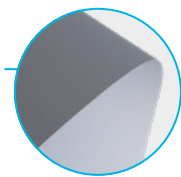
Production Lead Time: 1 day for no-curl opaque fabric / 2 days for dry-erase media from final proof approval



Flip-lever telescoping pole makes setup and adjustment simple.



Hook-and-loop fasteners make banners easy to swap out.



Our sustainable display option uses PVC-free media and includes the recyclable aluminum base.



Durable, lightweight aluminum base features chrome end caps.

STRATUS RETRACTOR



This footless base features a low center of gravity to keep it stable.

- Banner available in Titan™ no-curl hybrid media, Titan™ no-curl opaque fabric or PVC-free silver backed media

Stratus Retractor

Item #	Description	1	2-5	6-11	12-24
262072	31.5" No-Curl Hybrid Media Kit	392.75	369.25	353.50	330.00
262151	31.5" No-Curl Opaque Fabric Kit	392.75	369.25	353.50	330.00
261461	31.5" PVC-Free Silver Backed Media Kit	392.75	369.25	353.50	330.00
262074	33.5" No-Curl Hybrid Media Kit	407.75	383.50	367.00	342.50
262152	33.5" No-Curl Opaque Fabric Kit	407.75	383.50	367.00	342.50
261462	33.5" PVC-Free Silver Backed Media Kit	407.75	383.50	367.00	342.50
262076	36" No-Curl Hybrid Media Kit	433.75	407.75	390.25	364.25
262153	36" No-Curl Opaque Fabric Kit	433.75	407.75	390.25	364.25
261463	36" PVC-Free Silver Backed Media Kit	433.75	407.75	390.25	364.25

Setup fee: \$20(G)

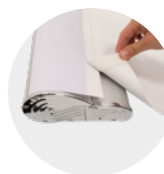
Kit Includes: Hardware, Installed Graphic and Soft Carry Case

Pricing is subject to change.

USD MSRP (C)

Description	Product Size	Finished Graphic Size	Product Wt.
31.5"	33"W x 67.5"-81.625"H x 7.125"D	view online template	11.25 lbs.
33.5"	34.25"W x 67.5"-81.625"H x 7.125"D	view online template	12 lbs.
36"	37.25"W x 67.5"-81.625"H x 7.125"D	view online template	12.5 lbs.

Production Lead Time: 2 days from final proof approval



Hook-and-loop fasteners make banners easy to swap out.



Shock cord pole with telescoping flip-lever extension makes setup and adjustment simple.

PRICES ARE SUBJECT TO CHANGE. No setup fee on orders placed via our website. Visit showdowndisplays.com for current pricing, graphic templates, product videos and assembly instructions.

showdowndisplays.com

EUROFIT BANNER DISPLAY



A fabric graphic cover slides over a tubed frame, letting you create amazing backdrops or portable privacy walls.

- Multiple sizes can be arranged together for endless display possibilities
- Artwork is dye sublimated on recycled polyester knit
- Double-sided graphic cover is viewable from both the front and back of the display
- Steel base with a black, powder-coated finish
- Not compatible with EuroFit Connector or EuroFit Cascade Merchandiser kits

EuroFit Banner Display

Item #	Description	1	2-5	6-11	12-24
255110	2' Kit	317.00	307.50	298.00	288.50
255113	3' Kit	435.00	422.00	409.00	396.00

Setup fee: \$20(G)

Kit Includes: Hardware, Graphic Cover and Soft Carry Case

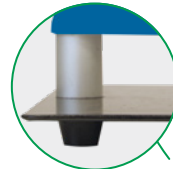
Pricing is subject to change.

USD MSRP (C)

Description	Product Size	Finished Graphic Size	Product Wt.	Media
2'	25.75"W x 91"H x 10"D	view online template	15.5 lbs.	recycled polyester knit
3'	37.75"W x 91"H x 10"D	view online template	20.5 lbs.	recycled polyester knit

Production Lead Time: 4 days from final proof approval

Sustainable recycled polyester knit is made with fibers recycled from plastic bottles.



Plastic feet elevate the base and keep the display stable.



Add-Ons

EuroFit Light Clamp

Item #	Description	1	2-5	6-11	12-24
255125	Light Clamp	7.56	7.33	7.11	6.88

Pricing is subject to change.

USD MSRP (C)

Ultimate LED Single Light Kit

Item #	Description	1	2-5	6-11	12-24
150120	Kit	199.50	193.50	187.50	181.50

Pricing is subject to change.

USD MSRP (C)

Hardware Lead Time: Ships same day when ordered before 2 p.m. Central

FRAMEWORX BANNER DISPLAY



These lightweight displays feature a contemporary design that brings new life to your exhibit.

- Banners attach using low-profile clear grommets
- Face cutout hole location is standard and cannot be customized

FrameWorx Banner Display

Item #	Description	1	2-5	6-11	12-24
263061	3' Single-Sided Kit	204.20	196.00	187.80	179.70
263062	3' Double-Sided Kit	243.30	233.60	223.90	214.10
263328	8.5' Kit	540.00	518.50	497.00	475.25
263331	10.5' Kit	590.00	566.50	543.00	519.50

Setup fee: \$20(G)

3' Kit Includes: Silver or Black Hardware, Graphic and Soft Carry Case

8.5' & 10.5' Kit Includes: Black Hardware, Graphic and Soft Carry Case

Pricing is subject to change.

USD MSRP (C)

Description	Product Size	Finished Graphic Size	Product Wt.	Media
3'	36.75"W x 74"H x 15.5"D	view online template	5.6 lbs.	13 oz. smooth scrim vinyl
8.5'	101.75"W x 90.5"H x 15.5"D	view online template	15 lbs.	600 denier polyester
10.5'	123.25"W x 90.25"H x 15.5"D	view online template	17 lbs.	600 denier polyester

3.5' FrameWorx Face Cutout

Item #	Description	1	2-5	6-11	12-24
263054	Single Kit	228.50	219.40	210.20	201.10

Setup fee: \$20(G)

Kit Includes: Silver or Black Hardware, Graphic and Soft Carry Case

Pricing is subject to change.

USD MSRP (C)

Product Size	Finished Graphic Size	Product Wt.	Media
41"W x 81.75"H x 15.5"D	view online template	6.2 lbs.	13 oz. smooth scrim vinyl

Production Lead Time: 2 days for 13 oz. smooth scrim vinyl / 4 days for 600 denier polyester from final proof approval



PRICES ARE SUBJECT TO CHANGE. No setup fee on orders placed via our website. Visit showdowndisplays.com for current pricing, graphic templates, product videos and assembly instructions.

BANNER DISPLAYS



31.5" x 70" Tri-X

Euro-X



The Tri-X back leg attaches to the aluminum hub to stabilize the display.



The Euro-X has an aluminum hub that extends into the strong support leg.

X BANNER DISPLAYS

The clean X design of these displays makes them simple, durable and easy to assemble.

- Artwork is printed on Titan™ 13 oz. smooth scrim vinyl
- The X shape of the frame is designed to keep the banner taut
- Corner grommets attach to plastic hooks on display arms
- Banners are finished with brass grommets by default; can be customized with nickel or clear plastic grommets by request
- Warranty details available online

Euro-X Banner Display

Item #	Description	1	2-5	6-11	12-24
263120	31.5" x 70" Kit	279.75	268.50	257.25	246.10

Setup fee: \$20(G)

Pricing is subject to change.

Kit Includes: Hardware, Graphic and Drawstring Case

USD MSRP (C)

Product Size	Finished Graphic Size	Product Wt.	Media
31.5"W x 70"H x 20.5"D	view online template	3.25 lbs.	Titan™ 13 oz. smooth scrim vinyl

Tri-X Banner Display

Item #	Description	1	2-5	6-11	12-24
263103	31.5" x 70" Kit	177.70	170.50	163.40	156.30
263112	31.5" x 79" Kit	204.10	195.90	187.80	179.60
263100	33.5" x 80" Kit	208.30	200.00	191.70	183.30

Setup fee: \$20(G)

Pricing is subject to change.

Kit Includes: Hardware, Graphic and Drawstring Case

USD MSRP (C)

Description	Product Size	Finished Graphic Size	Product Wt.	Media
31.5" x 70"	31.5"W x 70"H x 31.5"D	view online template	2.25 lbs.	Titan™ 13 oz. smooth scrim vinyl
31.5" x 79"	31.5"W x 79"H x 32.5"D	view online template	3 lbs.	Titan™ 13 oz. smooth scrim vinyl
33.5" x 80"	33.5"W x 80"H x 32.5"D	view online template	3.25 lbs.	Titan™ 13 oz. smooth scrim vinyl

Production Lead Time: 2 days from final proof approval



Shown with backlit woven polyester

HEADLINER BANNER DISPLAY



This enormous banner display is great for use at outdoor events.

- Banner available in backlit woven polyester or Titan™ 18 oz. opaque scrim vinyl
- Vinyl banners can be printed single- or double-sided; polyester banner available single-sided only
- Includes four heavy-duty black stakes
- Adjustable frame hardware is compatible with custom banner heights and widths (call for quote; restrictions may apply)
- Banners used outdoors have a 90-day warranty; banners used indoors have a 1-year warranty

Headliner Banner Display

Item #	Description	1	2-5	6-11	12-24
263400	Backlit Woven Polyester Single-Sided Kit	1749.00	1679.00	1609.00	1539.00
263401	18 oz. Opaque Scrim Vinyl Single-Sided Kit	1749.00	1679.00	1609.00	1539.00
263402	18 oz. Opaque Scrim Vinyl Double-Sided Kit	1888.00	1812.00	1737.00	1661.00

Setup fee: \$20(G)

Pricing is subject to change.

Kit Includes: Hardware, Graphic, 4 Stakes and Soft Carry Case with Wheels

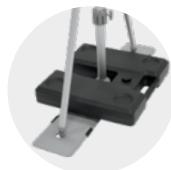
USD MSRP (C)

Product Size	Finished Graphic Size	Product Wt. (Polyester / Vinyl)
129.75"W x 85.25"H x 39.5"D	view online template	56 lbs. / 60 lbs.

Production Lead Time: 2 days for 18 oz. scrim vinyl / 4 days for backlit woven polyester from final proof approval



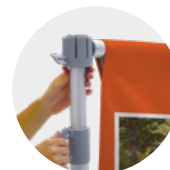
Banner rail slides into notches in the frame's hubs.



Set of two ballasts (item #263298 sold separately; see website) keep the feet weighted down.



Heavy-duty steel foot features a handle so it's easy to position during setup.



Thumbscrews on the frame make it easy to set up and adjust.

PRICES ARE SUBJECT TO CHANGE. No setup fee on orders placed via our website. Visit showdowndisplays.com for current pricing, graphic templates, product videos and assembly instructions.

showdowndisplays.com

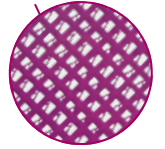
when choosing a banner
have you considered...

- Will you be using your banner indoors or outdoors?
- How long will your banner be displayed?
- Do you need a single- or double-sided banner?

9 OZ. MESH VINYL BANNER



3' x 6' banner with grommets



Made of breathable 60/40 mesh vinyl perfect for breezy days.

9 oz. Mesh Vinyl Banner (Single-Sided)

Item #	Description	Product Wt.	1	2-4	5-14	15-33
304411	2' x 6'	1.25 lbs.	64.40	59.10	54.20	50.20
Item #	Description	Product Wt.	1	2-3	4-9	10-22
304414	3' x 6'	2 lbs.	96.60	88.65	81.35	75.30
Item #	Description	Product Wt.	1	2-5	6-12	13-24
304417	4' x 8'	3 lbs.	158.10	144.60	133.80	120.80

Setup fee: \$20(G) Pricing is subject to change.
 USD MSRP (C)

13 OZ. SCRIM VINYL BANNER



Versatile enough for both indoor and outdoor use.

13 oz. Scrim Vinyl Banner (Single-Sided)

Item #	Description	Product Wt.	1-2	3-7	8-22	23-49
304360	2' x 4'	1 lb.	37.67	33.90	30.51	27.88
Item #	Description	Product Wt.	1	2-3	4-9	10-22
304364	3' x 6'	2.5 lbs.	84.75	76.25	68.65	62.70
Item #	Description	Product Wt.	1	2-5	6-12	13-24
304367	4' x 8'	4 lbs.	137.80	124.00	111.60	101.90

Setup fee: \$20(G) Pricing is subject to change.
 USD MSRP (C)



4' x 8' banner with grommets

18 OZ. OPAQUE SCRIM VINYL BANNER



This banner is reinforced with scrim, making it extremely durable.

18 oz. Opaque Scrim Vinyl Banner (Single-Sided)

Item #	Description	Product Wt.	1	2-3	4-9	10-22
304384	3' x 6'	2.5 lbs.	96.60	88.65	81.35	75.30
Item #	Description	Product Wt.	1	2-5	6-12	13-24
304387	4' x 8'	4 lbs.	157.80	144.90	134.20	120.60
Item #	Description	Product Wt.	1	2-4	5-9	10-19
304388	4' x 10'	5 lbs.	197.30	181.20	167.80	150.70

Setup fee: \$20(G) Pricing is subject to change.
 USD MSRP (C)



2' x 4' banner with pole pockets



18 oz. Opaque Scrim Vinyl Banner (Double-Sided)

Item #	Description	Product Wt.	1-2	3-7	8-22	23-49
304470	2' x 4'	1 lb.	90.95	85.50	79.50	74.65
Item #	Description	Product Wt.	1	2-3	4-9	10-22
304472	3' x 6'	2.5 lbs.	204.70	192.40	178.90	168.00
Item #	Description	Product Wt.	1	2-5	6-12	13-24
304474	4' x 8'	4 lbs.	341.50	317.50	298.50	276.00

Setup fee: \$20(G) Pricing is subject to change.
 USD MSRP (C)

Production Lead Time: 2 days from final proof approval

Popular Finishing Styles

Additional finishing styles available online.

Heat Weld

Single-sided vinyl banners only

Sewn

Fabric and vinyl banners



Hem & Grommets



Hem, Rope & Grommets



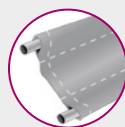
3'' Pole Pockets



Hem Only



Hem & Grommets



3'' Pole Pockets

PRICES ARE SUBJECT TO CHANGE. No setup fee on orders placed via our website. Visit showdowndisplays.com for current pricing, graphic templates, product videos and assembly instructions.

showdowndisplays.com

SAIL SIGNS

VALUE, STREAMLINE AND PREMIUM SAIL SIGNS



Sail signs are built to move in the wind, making them truly hard to miss.

- Warranty information available online
- Available single- or double-sided

when choosing a sail sign
have you considered...

- How long will your sail sign be displayed?
- Will you be using this product indoors or outdoors?



Value Sail Sign

Description	Item #	Single-Sided Flag				Double-Sided Flag				
		1	2-5	6-11	12-24	Item #	1	2-5	6-11	12-24
6.5' Teardrop Kit w/ Cross Base & Water Ballast	191611	204.30	198.20	192.10	185.90	191613	289.25	280.50	272.00	263.25
9.5' Teardrop Kit w/ Cross Base & Water Ballast	191619	231.70	224.80	217.80	210.90	191621	331.25	321.25	311.25	301.50
13' Teardrop Kit w/ Cross Base & Water Ballast	191627	288.00	279.25	270.75	262.00	191629	431.00	418.25	405.25	392.25
7.5' Razor Kit w/ Cross Base & Water Ballast	191651	204.30	198.20	192.10	185.90	191653	289.25	280.50	272.00	263.25
10.5' Razor Kit w/ Cross Base & Water Ballast	191659	231.70	224.80	217.80	210.90	191661	331.25	321.25	311.25	301.50
15' Razor Kit w/ Cross Base & Water Ballast	191667	288.00	279.25	270.75	262.00	191669	431.00	418.25	405.25	392.25

Setup fee: \$20(G)

Kit Includes: Hardware with Specified Base and Graphic (Does not include carry case)

Pricing is subject to change.

USD MSRP (C)



Streamline Sail Sign

Description	Item #	Single-Sided Flag				Double-Sided Flag				
		1	2-5	6-11	12-24	Item #	1	2-5	6-11	12-24
6' Teardrop Kit w/ Three-Legged Base & Water Ballast	191401	290.75	282.00	273.25	264.50	191409	402.50	390.50	378.50	366.50
8' Teardrop Kit w/ Scissor Base & Water Ballast	191403	368.50	357.50	346.50	335.25	191411	498.00	483.00	468.00	453.00
11.5' Teardrop Kit w/ Scissor Base & Water Ballast	191405	434.75	421.75	408.50	395.50	191413	619.00	600.50	582.00	563.00
15' Teardrop Kit w/ Scissor Base & Water Ballast	191407	514.50	498.75	483.50	468.00	191415	747.00	724.50	702.50	680.00
7' Razor Kit w/ Three-Legged Base & Water Ballast	191429	290.75	282.00	273.25	264.50	191437	402.50	390.50	378.50	366.50
9' Razor Kit w/ Scissor Base & Water Ballast	191431	368.50	357.50	346.50	335.25	191439	498.00	483.00	468.00	453.00
13' Razor Kit w/ Scissor Base & Water Ballast	191433	434.75	421.75	408.50	395.50	191441	619.00	600.50	582.00	563.00
17' Razor Kit w/ Scissor Base & Water Ballast	191435	514.50	498.75	483.50	468.00	191443	747.00	724.50	702.50	680.00

Setup fee: \$20(G)

Kit Includes: Hardware with Specified Base, Graphic and Soft Carry Case

Pricing is subject to change.

USD MSRP (C)



Premium Sail Sign

Description	Item #	Single-Sided Flag				Double-Sided Flag				
		1	2-5	6-11	12-24	Item #	1	2-5	6-11	12-24
6' Teardrop Kit w/ Three-Legged Base & Water Ballast	190979	326.25	316.50	306.50	296.75	190978	474.50	460.25	446.25	432.00
8' Teardrop Kit w/ Scissor Base & Water Ballast	190763	403.75	391.75	379.50	367.50	190762	568.50	551.50	534.50	517.50
11.5' Teardrop Kit w/ Scissor Base & Water Ballast	190765	472.00	458.00	443.75	429.50	190764	693.50	673.00	652.00	631.50
15' Teardrop Kit w/ Scissor Base & Water Ballast	190767	547.50	531.50	515.00	498.50	190766	817.50	793.00	768.50	744.00
7' Razor Kit w/ Three-Legged Base & Water Ballast	190985	326.25	316.50	306.50	296.75	190984	474.50	460.25	446.25	432.00
9' Razor Kit w/ Scissor Base & Water Ballast	190757	403.75	391.75	379.50	367.50	190756	568.50	551.50	534.50	517.50
13' Razor Kit w/ Scissor Base & Water Ballast	190759	472.00	458.00	443.75	429.50	190758	693.50	673.00	652.00	631.50
17' Razor Kit w/ Scissor Base & Water Ballast	190761	547.50	531.50	515.00	498.50	190760	817.50	793.00	768.50	744.00

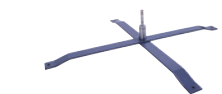
Setup fee: \$20(G)

Kit Includes: Hardware with Specified Base, Graphic and Soft Carry Case

Pricing is subject to change.

USD MSRP (C)

Production Lead Time: 4 days for Value and Premium / 2 days for Streamline from final proof approval



Item #190711
Heavy-duty cross base
(indoor/outdoor)



Item #190707
Scissor base
(indoor/outdoor)



Item #190706
Ground spike (outdoor)



Item #220351
Value sail sign soft carry case



Item #191591
Value cross base
(indoor/outdoor)*



Item #190708
Round water ballast for
6'-13' sail signs (indoor/outdoor)

Sail Sign Accessories

Item #	Description	Product Wt.	1	2-5	6-11	12-24
190706	Ground Spike	2 lbs.	59.70	57.90	56.10	54.30
190711	Heavy-Duty Cross Base	9 lbs.	105.20	102.10	98.90	95.75
190708	Round Water Ballast	0.5 lb.	57.20	55.50	53.80	52.05
190707	Scissor Base	7 lbs.	90.95	88.25	85.50	82.80
191591	Value Cross Base*	2.8 lbs.	37.40	36.28	35.16	34.03
220351	Value Sail Sign Soft Carry Case	0.8 lb.	23.55	22.84	22.14	21.43

Pricing is subject to change.

USD MSRP (C)

*Covered by a 90-day product warranty

Hardware Lead Time: Ships same day when ordered before 2 p.m. Central

PRICES ARE SUBJECT TO CHANGE. No setup fee on orders placed via our website. Visit showdowndisplays.com for current pricing, graphic templates, product videos and assembly instructions.

showdowndisplays.com

NYLON FLAG



Lightweight and fade-resistant, our nylon flags come in a variety of sizes and are perfect for indoor and outdoor use.

- Constructed of 200 denier nylon
- Standard finishing includes canvas header and brass grommets
- Four rows of lock-stitching provide extra reinforcement on the fly end of rectangular flags
- Single- and double-sided options available
- Custom sizes and finishing available (visit website or call for quote; restrictions may apply)
- Flags used outdoors have a 90-day warranty; flags used indoors have a 1-year warranty
- Not eligible for Rush Service

Rectangle Nylon Flag

Item #	Description	Product Wt.	1	2-5	6-11	12-24
304535	3' x 5' Single-Sided Flag	0.5 lb.	101.70	81.35	76.30	66.10
304555	3' x 5' Double-Sided Flag	1.5 lbs.	203.30	162.60	152.50	132.20
304536	4' x 6' Single-Sided Flag	0.7 lb.	139.80	111.80	104.80	90.85
304556	4' x 6' Double-Sided Flag	2.1 lbs.	279.75	223.80	209.80	181.90
304537	5' x 8' Single-Sided Flag	1 lb.	203.30	162.60	152.50	132.20
304557	5' x 8' Double-Sided Flag	3 lbs.	406.75	325.50	305.00	264.50

Setup fee: \$20(G)

Pricing is subject to change.

USD MSRP (C)

Production Lead Time: 4 days from final proof approval



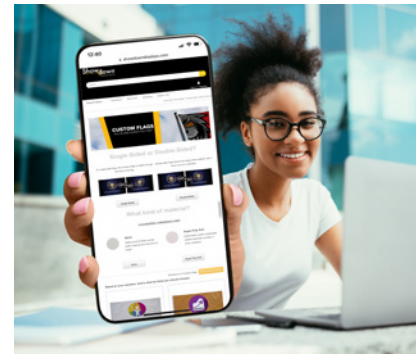
Single-Sided

Single-sided flags are printed on one side; reverse image shows through the back.



Double-Sided

Double-sided flags have the image printed correctly on both sides with a block-out polyester liner.



FABRIC FLAG



Easy to hang, this flag works with any standard flagpole.

- Best for outdoor use
- Single- and double-sided options available
- Artwork is dye sublimated on super poly knit fabric for single-sided flags and on block-out polyester for double-sided flags
- Custom sizes and finishing available (visit website or call for quote; restrictions may apply)
- Flags used outdoors have a 90-day warranty; flags used indoors have a 1-year warranty

Rectangle Fabric Flag

Item #	Description	Product Wt.	1	2-5	6-11	12-24
300007	3' x 5' Single-Sided Flag	0.5 lb.	106.80	85.45	80.10	69.40
300019	3' x 5' Double-Sided Flag	1 lb.	213.50	170.80	160.10	138.80
300011	4' x 6' Single-Sided Flag	1 lb.	146.80	117.40	110.10	95.40
300020	4' x 6' Double-Sided Flag	2 lbs.	293.75	235.00	220.30	190.90
300015	5' x 8' Single-Sided Flag	1.25 lbs.	213.50	170.80	160.10	138.80
300021	5' x 8' Double-Sided Flag	2.5 lbs.	427.00	341.75	320.25	277.75

Setup fee: \$20(G)

Pricing is subject to change.

USD MSRP (C)

Production Lead Time: 4 days from final proof approval



Double-sided flags feature a lightweight block-out polyester for increased flyability.



Single-Sided

Single-sided flags are printed on one side; reverse image shows through the back.



Double-Sided

Double-sided flags have the image printed correctly on both sides with a block-out polyester.

PRICES ARE SUBJECT TO CHANGE. No setup fee on orders placed via our website. Visit showdowndisplays.com for current pricing, graphic templates, product videos and assembly instructions.

showdowndisplays.com

SIGNAGE

SIGNICADE® AND SIGNICADE® DELUXE A-FRAMES



With different sizes to choose from, these A-frames fit a variety of spaces.

- Maintenance-free and weather-resistant
- Folds flat for transport or storage



Signicade A-Frame

Item #	Description	1	2-5	6-11	12-24
210133	Kit	218.70	212.10	202.20	195.60

Setup fee: \$20(G)

Pricing is subject to change.

Kit Includes: Orange, Yellow or White Hardware, 2 Single-Sided Graphics, 2 Strips of Hook and 2 Strips of Loop USD MSRP (C)

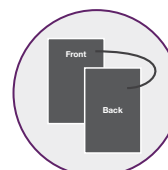
Product Size	Finished Graphic Size	Product Wt.	Media
24.5"W x 42"H x 31"D	view online template	20 lbs.	4 mm corrugated plastic

Frame Colors Orange PMS 2028 Yellow PMS 123 White

Production Lead Time: 2 days from final proof approval

when choosing signage have you considered...

- Will your sign be used indoors or outdoors?
- Will your message be permanent or will it change frequently?
- Will your sign be stationary or will you be transporting it from place to place?



Double-sided signboards have your artwork printed on both sides, making each signboard reversible.



Signicade Deluxe A-Frame

Item #	Description	1	2-5	6-11	12-24
210121	Single-Sided Kit	240.40	232.90	222.10	214.60
210122	Double-Sided Kit	257.25	249.70	237.80	230.40

Setup fee: \$20(G)

Pricing is subject to change.

Kit Includes: Black or White Hardware and 2 Single- or Double-Sided Graphics USD MSRP (C)

Product Size	Finished Graphic Size	Product Wt.	Media
27"W x 38.5"H x 19"D	view online template	21 lbs.	4 mm corrugated plastic

Frame Colors Black White

Production Lead Time: 2 days from final proof approval



Features & Benefits



Plastic base won't rust, making it great for outdoor use.



Convenient molded handle makes it easy to move.



Frames can be filled with water or sand for stability.



Signboards are easy to swap out to accommodate frequent message changes.

PRICES ARE SUBJECT TO CHANGE. No setup fee on orders placed via our website. Visit showdowndisplays.com for current pricing, graphic templates, product videos and assembly instructions.

CORRUGATED PLASTIC SIGN



Great for use on lawns, this sign gives you a simple, inexpensive way to get your message noticed.

- Constructed of 4 mm corrugated plastic
- Full-color artwork can be printed on one or both sides
- Custom sizes and shapes available (call for quote; restrictions may apply)
- Corrugated plastic can be recycled after use

Corrugated Plastic Sign

Item #	Description	1	2-5	6-11	12-24
271110	36"W x 24"H Single-Sided	27.57	26.74	25.92	25.09
271111	36"W x 24"H Double-Sided	36.21	35.12	34.04	32.95
271113	24"W x 18"H Single-Sided	18.28	17.73	17.18	16.63
271114	24"W x 18"H Double-Sided	23.89	23.17	22.46	21.74

Setup fee: \$20(G)

Pricing is subject to change.

USD MSRP (C)

Production Lead Time: 2 days from final proof approval

STANDARD STEP STAKE

- Installation is quick and easy

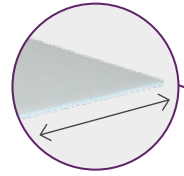
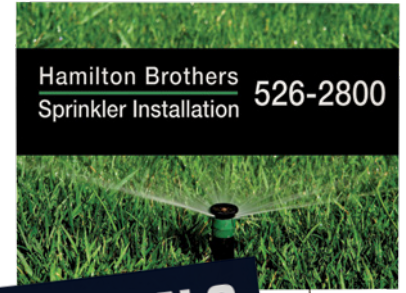
Standard Step Stake

Item #	Description	1-10	11-20	21-30	31+
381501	Standard Step Stake	2.83	2.77	2.69	2.63

Pricing is subject to change.

USD MSRP (C)

Hardware Lead Time: Ships same day when ordered before 2 p.m. Central



Stakes (sold separately) slide into fluted openings along the width of the signboard.

FLOOR HUGGER MAT



Put quality designs right at your feet. The Floor Hugger mat features a nylon yarn surface with black rubber borders and backing.

- Treated with Stainstopper™ and static dissipative
- Will not crack or curl
- Produced with polyester PET yarn consisting of 100% post-consumer recycled content
- Mat sizes are not exact; allow 3-5% size variance
- Art restrictions may apply (see website for details)
- Not eligible for Rush Service

Floor Hugger Mat

Item #	Description	Product Wt.	1	2-5	6-10	11-25
259000	3' x 5'	8 lbs.	346.00	283.75	245.60	235.20
259001	3' x 10'	16 lbs.	568.00	465.75	403.25	386.25
259002	4' x 6'	12 lbs.	442.25	362.50	314.00	300.75

Setup fee: \$20(G)

Pricing is subject to change.

USD MSRP (C)

Production Lead Time: 7 days from final proof approval

Light colors show dirt easily and are not recommended for background colors. Item has limited number of available colors (150). We cannot guarantee color matching. Test strip/match print/test grid not available.



4' x 6'



Mat features chemical-resistant plush carpet.



10' tent shown with full-bleed dye sublimation

when choosing a tent
have you considered...

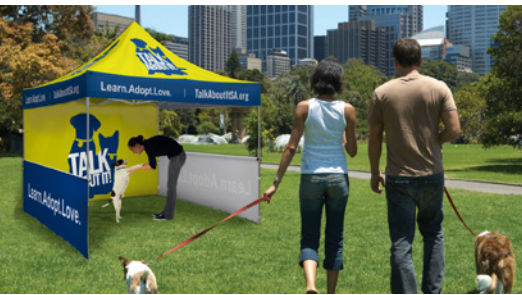
- How frequently will you be using your tent?
- What is the desired impact of your promotional message?
- Would you like to add accessories for additional branding options?

10' STANDARD TENT



This popular tent strikes a perfect balance between cost effectiveness and portability.

- 1.125"W square legs constructed of 1 mm pebble powder-coated steel
- ABS nylon joints
- Crank-up canopy creates a taut, clean peak
- 10' canopy available in eight stock colors (see below), with full-bleed dye sublimation or with full-bleed UV printing (available online)



10' Standard Tent

Item #	Description	1	2-5	6-11	12-24
240611	Full-Color Imprint Kit (1 Location)	613.50	601.00	589.00	570.50
240612	Full-Color Imprint Kit (2 Locations)	681.50	668.00	654.50	634.00
240614	Full-Color Imprint Kit (4 Locations)	801.50	785.50	769.50	745.50
240619	Dye Sublimation Kit	1002.00	982.00	962.00	931.50

Setup fee: \$20(G)

Pricing is subject to change.

Kit Includes: Tent Frame, Canopy, Stake Kit and Soft Carry Case with Wheels

USD MSRP (C)

Product Size	Finished Graphic Size	Product Wt.
118.5"W x 127.5"-140"H x 118.5"D	view online template	51.5 lbs.

Production Lead Time: 4 days for full-color imprint / 7 days for dye sublimation from final proof approval



Legs feature plastic push buttons for pinch-free height adjustments.



Easy-Glide Tent Feet allow the tent frame to slide on dirt and grass, preventing the legs from catching. US Patent #D760857

Features & Benefits



Sets up in minutes.



Adjust tent height with the push of a button.



Crank-up canopy creates a taut, clean peak.



Secure tent to the ground with stake kit.



Collapses easily to store in soft case with wheels.

10' Tent Stock Canopy Colors



WHITE	LEMON PMS 109	BLAZE ORANGE PMS 804	CHERRY PMS 1795
EMERALD PMS 347	COBALT PMS 7683	NAVY BLUE PMS 2767	BLACK

PRICES ARE SUBJECT TO CHANGE. No setup fee on orders placed via our website. Visit showdowndisplays.com for current pricing, graphic templates, product videos and assembly instructions.

showdowndisplays.com

8' & 10' DELUXE TENTS



Designed for frequent use, these tents feature a stronger, heavier steel frame.

- 1.25"W square legs constructed of 1 mm pebble powder-coated steel frame
- ABS glass-filled nylon joints
- Crank-up canopy creates a taut, clean peak
- 10' canopy available in eight stock colors (see page 16), with full-bleed dye sublimation or with full-bleed UV printing (available online)
- 8' canopy available with full-bleed dye sublimation only

8' Deluxe Tent

Item #	Description	1	2-5	6-11	12-24
240829	Dye Sublimation Kit	1667.00	1634.00	1600.00	1550.00

Setup fee: \$20(G)

Pricing is subject to change.

Kit Includes: Tent Frame, Canopy, Stake Kit and Soft Carry Case with Wheels USD MSRP (C)

10' Deluxe Tent

Item #	Description	1	2-5	6-11	12-24
240621	Full-Color Imprint Kit (1 Location)	734.00	719.50	704.50	682.50
240622	Full-Color Imprint Kit (2 Locations)	802.50	786.00	770.00	746.00
240624	Full-Color Imprint Kit (4 Locations)	922.00	903.50	885.00	857.50
240629	Dye Sublimation Kit	1122.00	1100.00	1078.00	1044.00

Setup fee: \$20(G)

Pricing is subject to change.

Kit Includes: Tent Frame, Canopy, Stake Kit and Soft Carry Case with Wheels USD MSRP (C)

Description	Product Size	Finished Graphic Size	Product Wt.
8'	96"W x 117.5"-130"H x 96"D	view online template	58 lbs.
10'	118.5"W x 127"-139.5"H x 118.5"D	view online template	63.5 lbs.

Production Lead Time: 4 days for full-color imprint / 7 days for dye sublimation from final proof approval



10' tent shown in lemon with full-color imprint (2 locations)

8' tent



Legs feature levers for easy height adjustments.



Easy-Glide Tent Feet allow the tent frame to slide on dirt and grass, preventing the legs from catching. US Patent #D760857

10' & 20' PREMIUM TENTS



These Premium tents feature a strong aluminum frame.

- 1.75" diameter hexagon legs constructed of 0.8 mm anodized aluminum frame
- ABS glass-filled nylon joints
- Crank-up canopy creates a taut, clean peak
- 10' canopy available in eight stock colors (see page 16), with full-bleed dye sublimation or with full-bleed UV printing (available online)
- 20' canopy available in white, cherry, cobalt, navy, black, with full-bleed dye sublimation or with full-bleed UV printing (available online)

10' Premium Tent

Item #	Description	1	2-5	6-11	12-24
240631	Full-Color Imprint Kit (1 Location)	819.00	802.50	786.00	761.50
240632	Full-Color Imprint Kit (2 Locations)	887.00	869.50	851.50	825.00
240634	Full-Color Imprint Kit (4 Locations)	1007.00	986.50	966.50	936.50
240639	Dye Sublimation Kit	1207.00	1183.00	1159.00	1123.00

Setup fee: \$20(G)

Pricing is subject to change.

Kit Includes: Tent Frame, Canopy, Stake Kit and Soft Carry Case with Wheels USD MSRP (C)

10' x 20' Premium Tent

Item #	Description	1	2-5	6-11	12-24
240571	Full-Color Imprint Kit (1 Location)	1278.00	1253.00	1227.00	1189.00
240572	Full-Color Imprint Kit (2 Locations)	1349.00	1322.00	1295.00	1255.00
240574	Full-Color Imprint Kit (4 Locations)	1585.00	1553.00	1521.00	1474.00
240578	Full-Color Imprint Kit (8 Locations)	1882.00	1844.00	1807.00	1750.00
240582	Full-Color Imprint Kit (12 Locations)	1905.00	1867.00	1829.00	1772.00
240583	Dye Sublimation Kit	2532.00	2481.00	2431.00	2355.00

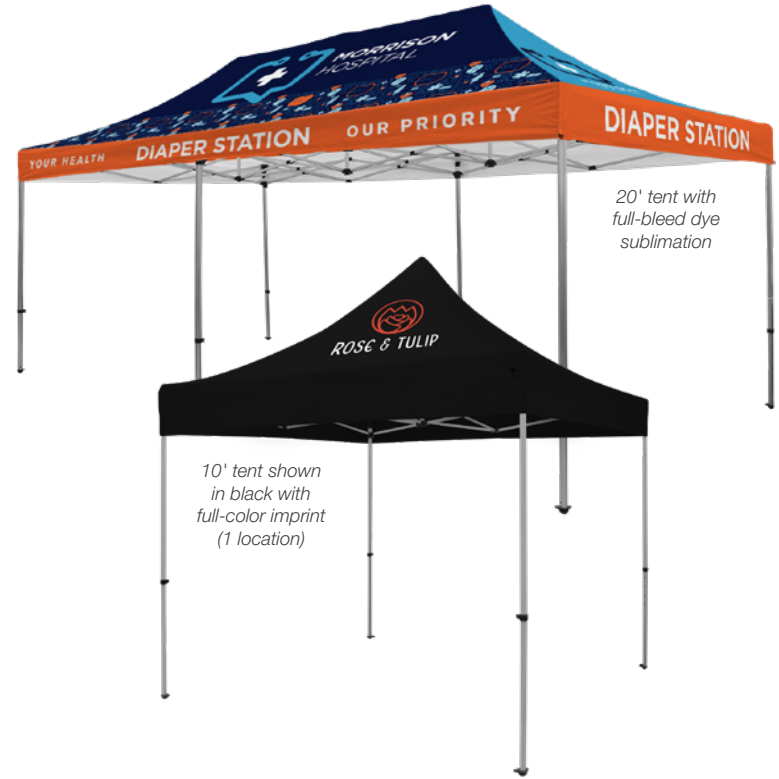
Setup fee: \$20(G)

Pricing is subject to change.

Kit Includes: Tent Frame, Canopy, Stake Kit and Soft Carry Case with Wheels USD MSRP (C)

Description	Product Size	Finished Graphic Size	Product Wt.
10'	118"W x 126.75"-139.25"H x 118"D	view online template	52 lbs.
10' x 20'	234.5"W x 126.75"-139.25"H x 118.25"D	view online template	92 lbs.

Production Lead Time: 4 days for full-color imprint / 7 days for dye sublimation from final proof approval



20' tent with full-bleed dye sublimation

10' tent shown in black with full-color imprint (1 location)



Legs feature levers for easy height adjustments.



Easy-Glide Tent Feet allow the tent frame to slide on dirt and grass, preventing the legs from catching. US Patent #D760857

PRICES ARE SUBJECT TO CHANGE. No setup fee on orders placed via our website. Visit showdowndisplays.com for current pricing, graphic templates, product videos and assembly instructions.

MARKET UMBRELLAS



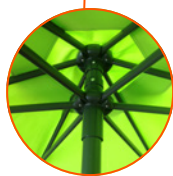
Shown with dye sublimation (single-sided)



Pole is constructed of steel for an industrial aesthetic.



Shown in black/white with full-color imprint (6 locations)



Steel pole and ribs provide a strong frame.



7' STEEL MARKET UMBRELLA



Built to brave the elements, this market umbrella brings lasting comfort to every outdoor moment.

- 88" arc with six-panel construction
- 38 mm steel two-piece pole with 25 mm steel ribs
- Wind vent technology allows greater airflow
- Canopy is constructed of UV-treated rPET polyester
- Available with or without valance; stock color options vary
- Custom options available (call for quote; restrictions may apply)
- Dye sublimation is not eligible for Rush Service

7' Steel Market Umbrella

Item #	Description	1	2-5	6-11	12-24
AU0031	Full-Color Imprint Kit (1 Location)	121.00	116.60	112.00	107.60
AU0033	Full-Color Imprint Kit (3 Locations)	130.80	126.00	121.10	116.40
AU0036	Full-Color Imprint Kit (6 Locations)	145.50	140.20	134.70	129.40
AU0385	Dye Sublimation Kit (Single-Sided)	226.60	218.30	209.70	201.60
AU0386	Dye Sublimation Kit (Double-Sided)	296.50	285.75	274.50	263.75

Setup fee: \$20(G)

Pricing is subject to change.

Kit Includes: Hardware and Canopy (Base required. Sold separately; see website).

USD MSRP (C)

7' Steel Market Umbrella with Valance

Item #	Description	1	2-5	6-11	12-24
AU0V31	Full-Color Imprint Kit (1 Location)	121.00	116.60	112.00	107.60
AU0V32	Full-Color Imprint Kit (2 Locations)	125.90	121.30	116.50	112.00
AU0V33	Full-Color Imprint Kit (3 Locations)	130.80	126.00	121.10	116.40
AU0V36	Full-Color Imprint Kit (6 Locations)	145.50	140.20	134.70	129.40
AUV385	Dye Sublimation Kit (Single-Sided)	226.60	218.30	209.70	201.60
AUV386	Dye Sublimation Kit (Double-Sided)	296.50	285.75	274.50	263.75

Setup fee: \$20(G)

Pricing is subject to change.

Kit Includes: Hardware and Canopy (Base required. Sold separately; see website).

USD MSRP (C)

Product Size	Arc	Open Diameter Size	Finished Graphic Size	Product Wt.	Media
83.5"W x 96"H x 83.5"D	88"	83.5"	view online template	12 lbs.	rPET polyester

Production Lead Time: 7 days for full-color imprint / 30 days for dye sublimation from final proof approval

PRICES ARE SUBJECT TO CHANGE. No setup fee on orders placed via our website. Visit showdowndisplays.com for current pricing, graphic templates, product videos and assembly instructions.

showdowndisplays.com

Stock 7' Steel Market Umbrella Colors

- White
- Natural PMS 9060
- Cream PMS 7499
- Canary PMS 102
- Pumpkin PMS 165
- Crimson PMS 186
- Ruby PMS 201
- Pink PMS 204
- Grape PMS 2607
- Light Blue PMS 543
- Sky Blue PMS 2995
- Lapis PMS 2945
- Midnight PMS 2965
- Lime Green PMS 375
- Spruce PMS 3435
- Cool Gray 11
- Black

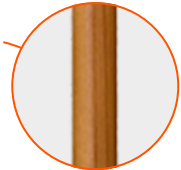
Stock 7' Steel Market Umbrella with Valance Colors

- White
- Crimson PMS 186
- Lapis PMS 2945
- Midnight PMS 2965
- Spruce PMS 3435
- Black
- Black/White
- White/Crimson PMS 186
- White/Lapis PMS 2945
- White/Midnight PMS 2965

PMS colors are for reference only and may vary slightly from actual color.



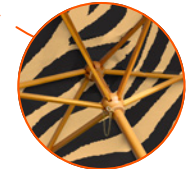
Shown in white/midnight with full-color imprint (2 locations)



Pole is constructed of hardwood for a natural aesthetic.



Shown with dye sublimation (double-sided)



Hardwood pole and ribs provide a strong, natural frame.

7' WOOD MARKET UMBRELLA



Forged by nature, built to last – the strongest wood frame in the industry!

- 87" arc with six-panel construction
- 38 mm dia. hardwood pole with 25 mm dia. hardwood ribs
- Two-piece brass screw-locking pole design for easy setup and storage
- Manual pin-and-chain locking system secures canopy in place
- Wind vent technology allows greater airflow
- Canopy is constructed of UV-treated rPET polyester
- Available with or without valance; stock color options vary
- Custom options available (call for quote; restrictions may apply)
- Dye sublimation is not eligible for Rush Service

7' Wood Market Umbrella

Item #	Description	1	2-5	6-11	12-24
AU0041	Full-Color Imprint Kit (1 Location)	132.90	128.00	123.00	118.20
AU0043	Full-Color Imprint Kit (3 Locations)	142.70	137.50	132.10	126.90
AU0046	Full-Color Imprint Kit (6 Locations)	157.40	151.70	145.70	140.00
AU0401	Dye Sublimation Kit (Single-Sided)	238.50	229.80	220.70	212.10
AU0402	Dye Sublimation Kit (Double-Sided)	308.50	297.25	285.50	274.50

Setup fee: \$20(G)

Pricing is subject to change.

Kit Includes: Hardware and Canopy (Base required. Sold separately; see website).

USD MSRP (C)

7' Wood Market Umbrella with Valance

Item #	Description	1	2-5	6-11	12-24
AU0V41	Full-Color Imprint Kit (1 Location)	132.90	128.00	123.00	118.20
AU0V42	Full-Color Imprint Kit (2 Locations)	137.80	132.80	127.50	122.60
AU0V43	Full-Color Imprint Kit (3 Locations)	142.70	137.50	132.10	126.90
AU0V46	Full-Color Imprint Kit (6 Locations)	157.40	151.70	145.70	140.00
AUV401	Dye Sublimation Kit (Single-Sided)	238.50	229.80	220.70	212.10
AUV402	Dye Sublimation Kit (Double-Sided)	308.50	297.25	285.50	274.50

Setup fee: \$20(G)

Pricing is subject to change.

Kit Includes: Hardware and Canopy (Base required. Sold separately; see website).

USD MSRP (C)

Product Size	Arc	Open Diameter Size	Finished Graphic Size	Product Wt.	Media
70.5"W x 95"H x 70.5"D	87"	70.5"	view online template	13 lbs.	rPET polyester

Production Lead Time: 7 days for full-color imprint / 30 days for dye sublimation from final proof approval

Stock 7' Wood Market Umbrella Colors

○ White	○ Natural PMS 9060
○ Cream PMS 7499	○ Canary PMS 102
○ Pumpkin PMS 165	○ Crimson PMS 186
○ Ruby PMS 201	○ Pink PMS 204
○ Grape PMS 2607	○ Light Blue PMS 543
○ Sky Blue PMS 2995	○ Lapis PMS 2945
○ Midnight PMS 2965	○ Lime Green PMS 375
○ Spruce PMS 3435	○ Cool Gray 11
○ Black	

Stock 7' Wood Market Umbrella with Valance Colors

○ White	○ Crimson PMS 186
○ Lapis PMS 2945	○ Midnight PMS 2965
○ Spruce PMS 3435	○ Black
○ Black/White	○ White/Crimson PMS 186
○ White/Lapis PMS 2945	○ White/Midnight PMS 2965

PMS colors are for reference only and may vary slightly from actual color.

PRICES ARE SUBJECT TO CHANGE. No setup fee on orders placed via our website. Visit showdowndisplays.com for current pricing, graphic templates, product videos and assembly instructions.

HANDHELD UMBRELLAS



Shown with dye sublimation (double-sided)

Single-sided dye sublimated umbrellas are printed on one side; reverse image shows through underneath.



Shown in white/pumpkin with full-color imprint (1 location)

Auto-open button is easily accessible on the anti-slip rubber handle with wrist strap.



STEAL UMBRELLA



This versatile and eco-friendly umbrella is the perfect everyday companion, offering great quality at a low price.

- 44" arc with eight-panel construction
- Auto-open folding umbrella
- Steel shaft and fiberglass ribs
- Anti-slip rubber handle with wrist strap
- Solid-color canopy is constructed of rPET polyester; two-color canopy is constructed of rPET polyester and nylon
- Minimum order quantity of 12 for full-color imprint; 25 for dye sublimation
- Custom options available (call for quote; restrictions may apply)
- Dye sublimation is not eligible for Rush Service

Full-Color Imprint

Item #	Description	12-24	25-49	50-74	75-99
A00041	Steal Umbrella (1 Location)	12.54	12.06	11.55	11.03
A00042	Steal Umbrella (2 Locations)	13.90	13.36	12.80	12.23
A00044	Steal Umbrella (4 Locations)	16.62	16.12	15.62	15.29

Setup fee: \$20(G)

Stock fabric colors with full-color artwork.
Minimum order quantity of 12.

Pricing is subject to change.

USD MSRP (C)

Closed Product Size	Arc	Finished Graphic Size	Product Wt.	Media
1.5"W x 13"H x 1.5"D	44"	view online template	11 lbs. (qty 12)	solid-color: rPET polyester two-color: rPET polyester (white) / nylon (color)

Dye Sublimation

Item #	Description	25-49	50-99	100-249	250-499
A00380	Steal Umbrella (Single-Sided)	43.60	41.92	40.16	38.35
A00381	Steal Umbrella (Double-Sided)	51.55	49.57	47.49	45.35

Setup fee: \$20(G)

White fabric fully dye sublimated with full-color artwork.
Minimum order quantity of 25.

Pricing is subject to change.

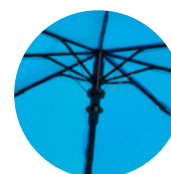
USD MSRP (C)

Closed Product Size	Arc	Finished Graphic Size	Product Wt.	Media
1.5"W x 13"H x 1.5"D	44"	view online template	23 lbs. (qty 25)	rPET polyester

Production Lead Time: 5 days for full-color imprint / 30 days for dye sublimation from final proof approval



Folds down to 13" for portability.



Steel shaft with fiberglass ribs for lightweight durability.

Stock Steal Umbrella Colors

- White
- Canary PMS 102
- Pumpkin PMS 165
- Crimson PMS 186
- Ruby PMS 201
- Pink PMS 204
- Purple PMS 2685
- Cyan PMS 2925
- Azure PMS 286
- Indigo PMS 295
- Lime Green PMS 375
- Spruce PMS 3435
- Cool Gray 11
- Black
- Black/White
- White/Pumpkin PMS 165
- White/Crimson PMS 186
- White/Ruby PMS 201
- White/Purple PMS 2685
- White/Azure PMS 286
- White/Indigo PMS 295
- White/Spruce PMS 3435

PMS colors are for reference only and may vary slightly from actual color.

PRICES ARE SUBJECT TO CHANGE. No setup fee on orders placed via our website. Visit showdowndisplays.com for current pricing, graphic templates, product videos and assembly instructions.

showdowndisplays.com

REBEL 2 UMBRELLA



This stylish and eco-conscious umbrella is designed for ultimate convenience and protection.

- 46" arc with eight-panel construction
- Fiberglass shaft and ribs
- Rubber grip handle with wrist strap
- Features an inverted design that prevents water from dripping when closed
- Canopy constructed with rPET polyester
- Minimum order quantity of 12 for full-color imprint; 25 for dye sublimation
- Custom options available (call for quote; restrictions may apply)
- Dye sublimation is not eligible for Rush Service

Full-Color Imprint

Item #	Description	12-24	25-49	50-74	75-99
A00171	Rebel 2 Umbrella (1 Location)	22.89	22.20	21.52	21.06
A00172	Rebel 2 Umbrella (2 Locations)	24.25	23.52	22.80	22.31
A00174	Rebel 2 Umbrella (4 Locations)	26.98	26.17	25.36	24.82

Setup fee: \$20(G) **Pricing is subject to change.**
 Stock fabric colors with full-color artwork. USD MSRP (C)
 Minimum order quantity of 12.

Closed Product Size	Arc	Finished Graphic Size	Product Wt.	Media
2.5"W x 34.5"H x 2.5"D	46"	view online template	18.25 lbs. (qty 12)	rPET polyester

Dye Sublimation

Item #	Description	25-49	50-99	100-249	250-499
A00384	Rebel 2 Umbrella (Double-Sided)	57.25	55.05	52.70	50.35

Setup fee: \$20(G) **Pricing is subject to change.**
 White fabric fully dye sublimated with full-color artwork. USD MSRP (C)
 Minimum order quantity of 25.

Closed Product Size	Arc	Finished Graphic Size	Product Wt.	Media
2.5"W x 34.5"H x 2.5"D	46"	view online template	38 lbs. (qty 25)	rPET polyester

Production Lead Time: 5 days for full-color imprint / 30 days for dye sublimation from final proof approval



Stock Rebel 2 Umbrella Colors

- Black
 - Black/Crimson PMS 186
 - Black/Azure PMS 286
- PMS colors are for reference only and may vary slightly from actual color.*

SUPER FLAT MINI UMBRELLA



This compact yet durable umbrella is designed for ultimate convenience and reliability.

- 43" arc with six-panel construction
- Auto-open/close folding umbrella
- Aluminum shaft and fiberglass ribs
- Rubber handle with wrist strap
- Wind vent technology allows greater airflow
- Canopy made with rPET polyester
- Minimum order quantity of 12
- Custom options available (call for quote; restrictions may apply)

Full-Color Imprint

Item #	Description	12-24	25-49	50-74	75-99
A00271	Super Flat Mini Umbrella (1 Location)	17.99	17.45	16.91	16.55
A00272	Super Flat Mini Umbrella (2 Locations)	19.35	18.77	18.19	17.80
A00273	Super Flat Mini Umbrella (3 Locations)	20.71	20.09	19.47	19.05

Setup fee: \$20(G) **Pricing is subject to change.**
 Stock fabric colors with full-color artwork. USD MSRP (C)
 Minimum order quantity of 12.

Closed Product Size	Arc	Finished Graphic Size	Product Wt.	Media
1.5"W x 10.5"H x 1.5"D	43"	view online template	9 lbs. (qty 12)	rPET polyester

Production Lead Time: 5 days from final proof approval



Stock Super Flat Mini Umbrella Colors

- Indigo PMS 295
 - Black
- PMS colors are for reference only and may vary slightly from actual color.*



SPIN 'N WIN PRIZE WHEEL



Give your next trade show or event a creative spin.

- Powder-coated steel legs
- A plastic clicker makes a ticking sound as the wheel spins
- Central disc panel attaches magnetically and remains stationary when the wheel spins
- Wheel has a 31.5" dia.
- All graphic panels can be custom printed with your design
- Includes twelve prize panels and central disc panel

Spin 'N Win Prize Wheel

Item #	Description	1	2-5	6-11	12-24
280104	Kit	733.00	718.50	711.00	696.50

Setup fee: \$20(G)

Pricing is subject to change.

Kit Includes: Hardware, Graphic Panels and Soft Carry Case

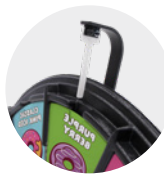
USD MSRP (C)

Product Size	Finished Graphic Size	Product Wt.	Media
31.25"W x 40.75"-72"H x 16"-31"D	view online template	16.5 lbs.	Titan™ no-curl laminated media

Production Lead Time: 2 days from final proof approval



Graphic panels and central disc panel can be printed using a desktop printer.



Loud clicker attracts attention at noisy events.

Need a Tabletop Game?

Simply remove the leg extensions to transform this prize wheel into a game suitable for tabletop use.



BAG TOSS GAME



Toss some friendly competition into your next event with this customizable game.

- Game includes two game boards and eight bean bags
- Two game boards clasp together into a single unit that can be easily transported using the convenient carry handle
- Durable plastic construction prevents rust and splinters
- Included rope acts as a distance regulator
- Hinged legs fold out to prop the game boards up at an angle
- 90-day warranty on graphic panels

Bag Toss Game

Item #	Description	1	2-5	6-11	12-24
280310	Kit	308.75	302.75	299.50	293.25

Setup fee: \$20(G)

Pricing is subject to change.

Kit Includes: Hardware, 8 Unimprinted Bean Bags and 2 Graphic Panels

USD MSRP (C)

Product Size	Finished Graphic Size	Product Wt.	Media
folded: 21.5"W x 2.75"H x 33.125"D (1) open: 21.5"W x 10.5"H x 32.75"D	view online template	21.5 lbs.	Titan™ no-curl laminated media

Production Lead Time: 3 days from final proof approval

Add-Ons

Attach the Bag Toss Buddy to your Bag Toss (sold separately) for access to a bag holder, score keeper and drink holder.

Personalize your bags with custom printed bean bags.

See website for details.



Item #280315
Custom Printed Bean Bags

Item #280314
Bag Toss Buddy



Built-in score keepers slide up and down the edges of the board.



Bean bags can be stored inside plastic molded pockets so they don't get left behind.

PICKLEBALL SET WITH NET



Everything you need to start the game.

- Game includes two paddles, two outdoor balls, steel poles and net
- Paddles are constructed with wood; net is 12"W x 35"H
- Available with full-color decal(s) on paddles; option for a double-sided imprint on net
- Decals are permanent and cannot be swapped or repositioned
- Assembly required

Pickleball Set with Net

Item #	Description	1	2-5	6-11	12-24
AG0181	Single-Sided Paddle Kit	173.30	164.50	156.20	143.50
AG0182	Double-Sided Paddle Kit	184.30	174.90	166.10	152.60

Setup fee: \$20(G) **Pricing is subject to change.**
 Kit Includes: 2 Single- or Double-Sided Decaled Paddles, 2 Outdoor Pickleball Balls, Net and Carry Case USD MSRP (C)

Pickleball Set with Imprinted Net

Item #	Description	1	2-5	6-11	12-24
AG0183	Single-Sided Paddle Kit	176.00	167.10	158.70	145.70
AG0184	Double-Sided Paddle Kit	187.00	177.60	168.60	154.80

Setup fee: \$20(G) **Pricing is subject to change.**
 Kit Includes: 2 Single- or Double-Sided Decaled Paddles, 2 Outdoor Pickleball Balls, Imprinted Net and Carry Case USD MSRP (C)

Product Size	Finished Graphic Size	Product Wt.	Media (Decal)
paddles: 8"W x 16"H x 3"D net: 12"W x 35"H	view online template	15 lbs.	decal vinyl film

Production Lead Time: 7 days from final proof approval



Want an imprinted carry case?
 Pickleball Set with Net Plus and Pickleball Set with Imprinted Net Plus options are available online.



Pickleball Set with Imprinted Net (Single-Sided)

WOOD CORNHOLE



This classic game is perfect for tailgates and company picnics.

- Game includes two game boards and eight unimprinted or dye sublimated bean bags
- Features regulation 6" dia. holes
- Vibrant full-color decals on game board
- Decals are permanent and cannot be swapped or repositioned
- Constructed with premium-grade plywood and solid wood legs
- Dye sublimation is not eligible for Rush Service

Wood Cornhole

Item #	Description	1	2-5	6-11	12-24
AG0158	Unimprinted Bean Bags Kit	322.25	314.00	307.75	300.75
AG0154	Dye Sublimated Bean Bags Kit	416.00	405.25	397.00	388.25

Setup fee: \$20(G) **Pricing is subject to change.**
 Kit Includes: Game with Applied Graphic Decals, 8 Unimprinted or Dye Sublimated Bean Bags (4 of Each Design) and Carry Case USD MSRP (C)

Wood Cornhole Plus

Item #	Description	1	2-5	6-11	12-24
AG0159	Unimprinted Bean Bags Kit	324.50	316.00	309.75	302.75
AG0155	Dye Sublimated Bean Bags Kit	418.25	407.50	399.25	390.25

Setup fee: \$20(G) **Pricing is subject to change.**
 Kit Includes: Game with Applied Graphic Decals, 8 Unimprinted or Dye Sublimated Bean Bags (4 of Each Design) and Imprinted Carry Case USD MSRP (C)

Product Size	Finished Graphic Size	Product Wt.	Media (Decal)
26"W x 6"H x 49"D	view online template	46 lbs.	decal vinyl film

Production Lead Time: 7 days from final proof approval



Wood Cornhole Plus has an imprinted carry case.



Unimprinted bean bags are available in combinations of white, red, royal, navy and black (four per color).



Features comfort grip steel handles.



Holds up to 85 standard 12 oz. cans with ice.

Built-in bottle opener.

Shown in metallic gray with wrap graphic and lid decal

SASQUATCH™ 54QT COOLER



Designed to impress, our steel-belted cooler is made with durability to keep up with any adventure.

- Tall design holds 2 liter bottles upright to help prevent spills
- Leak-resistant channel drain
- Constructed with steel
- Rust-resistant stainless steel lid latch and hardware
- Available in a variety of full-color imprint(s), decal(s) and wrap graphic
- Decals are permanent and cannot be swapped or repositioned
- Wrap graphic is not eligible for Rush Service

Sasquatch™ 54QT Cooler

Item #	Description	1	2-5	6-11	12-24
AC0221	Front Imprint	352.25	343.25	336.25	328.75
AC0222	Front and Lid Imprints	361.25	351.75	344.75	337.00
AC0223	Wrap Graphic with Lid Decal	396.25	386.00	378.25	369.75
AC0227	Wrap Graphic with Lid Decals	414.25	403.50	395.50	386.50

Setup fee: \$20(G)

Pricing is subject to change.

USD MSRP (C)

Product Size	Finished Graphic Size	Product Wt.	Media (Wrap / Decal)
22.5"W x 16.5"H x 14.5"D	view online template	23 lbs.	wrap vinyl / decal vinyl film

Production Lead Time: 7 days from final proof approval

Stock Sasquatch™ 54QT Cooler Colors

- White
- Azure PMS 286
- Metallic Gray PMS 877
- Crimson PMS 186
- Indigo PMS 295
- Black

PMS colors are for reference only and may vary slightly from actual color.

IGLOO® 60QT ROLLING COOLER



This large signature cube-shaped cooler brings impressive capacity and portability wherever you go.

- Features two rugged wheels and a locking, telescoping handle
- Constructed with durable plastic
- Molded-in side handles for easy lifting.
- Available with full-color decals
- Decals are permanent and cannot be swapped or repositioned

IGLOO® 60QT Rolling Cooler

Item #	Description	1	2-5	6-11	12-24
AC0131	Front, Side and Lid Decals	155.00	149.40	145.50	142.40

Setup fee: \$20(G)

Pricing is subject to change.

USD MSRP (C)

Product Size	Finished Graphic Size	Product Wt.	Media (Decal)
20"W x 22"H x 18"D	view online template	14 lbs.	hi tac decal vinyl film

Production Lead Time: 7 days from final proof approval

Stock IGLOO® 60QT Rolling Cooler Colors

- White
- Azure PMS 286
- Crimson PMS 186

PMS colors are for reference only and may vary slightly from actual color.



Telescoping handle for quick and simple transportation.



Holds up to 94 standard 12 oz. cans with ice.



Features a capped drainage hole.



Shown in white

PRICES ARE SUBJECT TO CHANGE. No setup fee on orders placed via our website. Visit showdowndisplays.com for current pricing, graphic templates, product videos and assembly instructions.

showdowndisplays.com

ROCK THE BOAT™ BAG



Built tough and ready to carry your brand wherever it goes.

- Available with vibrant full-color imprint or embroidery
- Minimum order quantity of six for full-color imprint; 12 for embroidery
- Embroidery is not eligible for Rush Service

Full-Color Front Imprint

Item #	Description	6-11	12-24	25-49	50-149
AB0041	Rock the Boat™ Bag	18.77	17.63	16.63	15.52

Setup fee: \$20(G) **Pricing is subject to change.**
 Stock fabric colors with full-color artwork. USD MSRP (C)
 Minimum order quantity of 6.

Embroidered

Item #	Description	12-24	25-49	50-74	75-99
ABE041	Rock the Boat™ Bag	25.62	24.47	23.44	22.42

Setup (includes embroidery tape) fee: \$110(G) **Pricing is subject to change.**
 Stock fabric colors with embroidery (max 6 thread colors). USD MSRP (C)
 Minimum order quantity of 12.

Product Size	Handle Drop	Finished Graphic Size	Product Wt. (Qty 6 / 12)	Media
20"W x 12"H x 7.5"D	9"	view online template	7.5 lbs. / 15 lbs.	15 oz. cotton canvas

Production Lead Time: 5 days for full-color imprint / 10 days for embroidery from final proof approval

Handles and trim are color-matched for a cohesive look.

Constructed of 15 oz. natural cotton canvas with expandable zipper closure.



Includes a front exterior pocket.



Shown in natural/maroon with full-color imprint

Stock Rock the Boat™ Bag Colors

- Azure PMS 286
- Indigo PMS 295
- Black
- Natural PMS 9060 / Pumpkin PMS 165
- Natural PMS 9060 / Crimson PMS 186
- Natural PMS 9060 / Ruby PMS 201
- Natural PMS 9060 / Maroon PMS 202
- Natural PMS 9060 / Azure PMS 286
- Natural PMS 9060 / Indigo PMS 295
- Natural PMS 9060 / Spruce PMS 3435
- Natural PMS 9060 / Black

PMS colors are for reference only and may vary slightly from actual color.

TRAVELER BAG



This bag combines durability and smart functionality to keep up with every adventure.

- Constructed of rPET polyester with a neutral gray recycled polyester lining
- Attaches to luggage with luggage sleeve for easy travel
- Available with vibrant full-color imprint or embroidery
- Minimum order quantity of six for full-color imprint; 12 for embroidery
- Embroidery is not eligible for Rush Service

Full-Color Front Imprint

Item #	Description	6-11	12-24	25-49	50-149
AB0151	Traveler Bag	79.75	74.90	70.65	65.95

Setup fee: \$20(G) **Pricing is subject to change.**
 Stock fabric colors with full-color artwork. USD MSRP (C)
 Minimum order quantity of 6.

Embroidered

Item #	Description	12-24	25-49	50-74	75-99
ABE151	Traveler Bag	86.60	82.70	79.25	75.80

Setup (includes embroidery tape) fee: \$110(G) **Pricing is subject to change.**
 Stock fabric colors with embroidery (max 6 thread colors). USD MSRP (C)
 Minimum order quantity of 12.

Product Size	Handle Drop	Finished Graphic Size	Product Wt. (Qty 6 / 12)	Media
25"W x 16"H x 8.5"D	8"	view online template	12 lbs. / 24 lbs.	rPET polyester

Production Lead Time: 5 days for full-color imprint / 10 days for embroidery from final proof approval

Features a removable and adjustable shoulder strap with swivel hooks.



Shown in black with embroidery

Features a front exterior pocket.



Expandable zipper top with interior pockets allows for additional packing space.



Padded bottom compartment keeps footwear separate.

Stock Traveler Bag Colors

- Indigo PMS 295
- Black

PMS colors are for reference only and may vary slightly from actual color.

PRICES ARE SUBJECT TO CHANGE. No setup fee on orders placed via our website (excludes embroidery). Visit showdowndisplays.com for current pricing, graphic templates, product videos and assembly instructions.

FLOOR DISPLAYS



Compatible displays can be hinged together using the included EuroFit Connector, item #255122. US Patent #9637963

when choosing a floor display have you considered...

- What is the size of your space?
- How will this display be transported?
- Will you be changing out your look and message?



EUROFIT WALLS



The ever-popular EuroFit line offers many elegant and versatile display solutions.

- Artwork is vibrantly dye sublimated on recycled polyester knit
- Hinge together separate EuroFit displays with the EuroFit Connector
- Create modular layouts with limitless possibilities

72" EuroFit Straight Wall

Item #	Description	1	2-5	6-11	12-24
256203	2'W Kit	291.00	282.25	273.50	265.00
256212	3'W Kit	384.50	364.00	347.00	330.25

Setup fee: \$20(G)

Kit Includes: Hardware, Graphic Cover, EuroFit Connector and Soft Carry Case

Pricing is subject to change.

USD MSRP (C)

Description	Product Size	Finished Graphic Size	Product Wt.	Media
2'W	24.5"W x 72"H x 19"D	view online template	7.5 lbs.	recycled polyester knit
3'W	36.5"W x 72"H x 19"D	view online template	8.25 lbs.	recycled polyester knit

90" EuroFit Straight Wall

Item #	Description	1	2-5	6-11	12-24
256215	3'W Kit	464.50	450.50	436.50	422.50
256233	5'W Kit	700.00	679.00	658.00	637.00
255180	8'W Kit	1063.00	1031.00	999.50	967.50
256251	10'W Kit	1216.00	1184.00	1160.00	1134.00
256427	20'W Kit	2355.00	2319.00	2251.00	2221.00

Setup fee: \$20(G)

Pricing is subject to change.

Kit Includes: Hardware, Graphic Cover, EuroFit Connector and Soft Carry Case
20' Display Includes: Hardware, Graphic Cover, 2 EuroFit Connectors and 2 Soft Carry Cases

USD MSRP (C)

Description	Product Size	Finished Graphic Size	Product Wt.	Media
3'W	36.5"W x 91.25"H x 19"D	view online template	10.3 lbs.	recycled polyester knit
5'W	60.5"W x 91.25"H x 19"D	view online template	12.6 lbs.	recycled polyester knit
8'W	96.5"W x 91.25"H x 19"D	view online template	18 lbs.	recycled polyester knit
10'W	115.5"W x 91.25"H x 19"D	view online template	21.25 lbs.	recycled polyester knit
20'W	231"W x 91.25"H x 19"D	view online template	42.75 lbs.	recycled polyester knit

Production Lead Time: 4 days from final proof approval



Get a green screen compatible backdrop printed as PMS 354C; available online.

PRICES ARE SUBJECT TO CHANGE. No setup fee on orders placed via our website. Visit showdowndisplays.com for current pricing, graphic templates, product videos and assembly instructions.

showdowndisplays.com

SPLASH DISPLAY



This pop-up display transforms from a compact unit to an impressive backdrop in minutes.

- Graphic panels are available in recycled polyester knit and block-out fabric
- Hook-and-loop fasteners make graphic panel installation simple
- Aluminum frame with nylon plastic hubs
- US Patent #9214104

8' Straight Splash

Item #	Description	1	2-5	6-11	12-24
341004	Recycled Polyester Knit Face Kit	1278.00	1252.00	1227.00	1214.00
342208	Block-Out Fabric Face Kit	1383.00	1356.00	1328.00	1314.00
341005	Recycled Polyester Knit Wrap Kit	1573.00	1532.00	1500.00	1465.00
342209	Block-Out Fabric Wrap Kit	1661.00	1617.00	1573.00	1535.00

Setup fee: \$20(G)

Pricing is subject to change.

Kit Includes: Frame, Graphic Panel and Soft Carry Case

USD MSRP (C)

Product Size 90"W x 89.5"H x 12.25"D
 Finished Graphic Size view online template
 Product Wt. 19.25 - 24.25 lbs.

10' Straight Splash

Item #	Description	1	2-5	6-11	12-24
341008	Recycled Polyester Knit Face Kit	1568.00	1519.00	1487.00	1454.00
342212	Block-Out Fabric Face Kit	1683.00	1640.00	1596.00	1559.00
341009	Recycled Polyester Knit Wrap Kit	1789.00	1753.00	1717.00	1699.00
342213	Block-Out Fabric Wrap Kit	1889.00	1851.00	1813.00	1794.00

Setup fee: \$20(G)

Pricing is subject to change.

Kit Includes: Frame, Graphic Panel and Soft Carry Case

USD MSRP (C)

Product Size 119"W x 89.5"H x 12.25"D
 Finished Graphic Size view online template
 Product Wt. 23.75 - 31 lbs.

Production Lead Time: 4 days from final proof approval



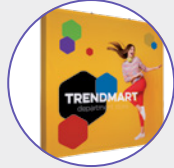
8' with wrap graphic panel

10' with face graphic panel

Kit Options



Face Graphic Kit
 Graphic panel covers the front of the frame.

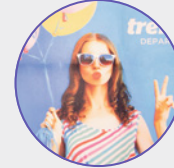


Wrap Graphic Kit
 Graphic panel covers the front and sides, extending to the first column of plastic hubs on the back of the frame. Back of the frame is not covered.

Media Options



Block-Out Fabric
 Block-out fabric is designed to prevent light from showing through the display. It is a good option for brightly lit areas.



Recycled Polyester Knit
 Sustainable recycled polyester knit is made with fibers recycled from plastic bottles.

BRAVO EXPANDING WRAP DISPLAY



The Bravo is the most durable and dependable expanding display available.

- Frame poles are adjustable to accommodate a variety of banner sizes (see website for details)
- Reinforced joints keep the banner taut over an extended period of time
- Graphics are dye sublimated on recycled polyester knit
- 100% recycled media is made with fibers recycled from plastic bottles
- Small feet for a discreet footprint
- Custom banner sizes available (call for quote; restrictions may apply)

Bravo Expanding Display

Item #	Description	1	2-5	6-11	12-24
254150	8' Kit	736.50	717.50	703.00	687.00
254151	10' Kit	892.50	869.00	852.00	832.50

Setup fee: \$20(G)

Pricing is subject to change.

Kit Includes: Hardware, Graphic and Soft Carry Case

USD MSRP (C)

Description 8' 94"W x 94.25"H x 14"D
 Product Size view online template
 Finished Graphic Size 20.2 lbs.
 Product Wt. recycled polyester knit
 10' 118"W x 94.25"H x 14"D
 view online template
 Media 22 lbs.
 recycled polyester knit

Production Lead Time: 4 days from final proof approval



The vertical clamping system lets you adjust height.



Durable rounded corners.

PRICES ARE SUBJECT TO CHANGE. No setup fee on orders placed via our website. Visit showdowndisplays.com for current pricing, graphic templates, product videos and assembly instructions.

showdowndisplays.com



12-Quad Classic

DELUXE GEOMETRIX DISPLAY



A strong, durable frame supports multiple graphic panels and shelves so you have countless options for setting up a creative display.

- Setup and teardown can be done in seconds
- Artwork is dye sublimated on polyester double knit
- Aluminum frame with nylon plastic hubs

Deluxe GeoMetrix Display

US Patent #9214104

Item #	Description	1	2-5	6-11	12-24
342006	9-Quad Classic Kit	1900.00	1843.00	1805.00	1748.00
342000	12-Quad Classic Kit	2244.00	2199.00	2154.00	2132.00

Setup fee: \$20(G)

Pricing is subject to change.

Kit Includes: Frame, Graphic Panels, 2 Internal Shelves and Soft Carry Case USD MSRP (C)
 Shelves do not fit in provided soft carry case.
 See website for shelf soft carry case.

Description	Product Size	Finished Graphic Size	Product Wt.	Media
9-quad classic	90"W x 89.5"H x 13"D	view online template	24 lbs.	polyester double knit
12-quad classic	118"W x 89.5"H x 13"D	view online template	30.5 lbs.	polyester double knit

Production Lead Time: 4 days from final proof approval



10'

8'

6'

3'

JOURNEY MODULAR DISPLAY SYSTEM



Pack up your SEG and go with this conveniently foldable frame.

- Modular design allows you to expand and modify into various configurations
- Artwork is dye sublimated on recycled polyester knit
- 100% recycled media is made with fibers recycled from plastic bottles
- Includes two graphic panels for a double-sided display
- 1.625" frame depth
- Tool-free assembly

Journey Full Wall

Item #	Description	1	2-5	6-11	12-24
254860	3'W Kit	513.50	492.75	472.25	451.75
254869	6'W Kit	933.00	914.00	856.50	838.00
254872	8'W Kit	1051.00	1031.00	965.50	945.50
254875	10'W Kit	1650.00	1609.00	1516.00	1475.00

Setup fee: \$20(G)

Pricing is subject to change.

3'W Kit Includes: Hardware, 2 Graphic Panels and Soft Carry Case USD MSRP (C)
 6'-10'W Kit Includes: Hardware, 2 Graphic Panels, 180° Connector Set and 2 Soft Carry Cases

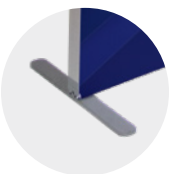
Description	Product Size	Finished Graphic Size	Product Wt.	Media
3'W	36.125"W x 90.625"H x 15.125"D	view online template	14 lbs.	recycled polyester knit
6'W	72"W x 90.625"H x 15.125"D	view online template	26.4 lbs.	recycled polyester knit
8'W	96"W x 90.625"H x 15.125"D	view online template	28.4 lbs.	recycled polyester knit
10'W	120"W x 90.625"H x 15.125"D	view online template	31.6 lbs.	recycled polyester knit

Production Lead Time: 4 days from final proof approval

Aluminum frame can be recycled after use.



Combine walls with other Journey components to craft a highly adaptable and visually striking display (sold separately).



Slim feet stabilize the display and have a sleek look.



The lightweight aluminum frame folds for portability.

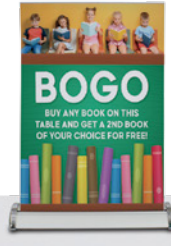
MINI TABLETOP DISPLAYS

These displays fit into small areas, making them perfect for tables and countertops.

- Lightweight and portable
- Warranties range between six months and one year (see website for details)
- Kit contents vary (see website for details)



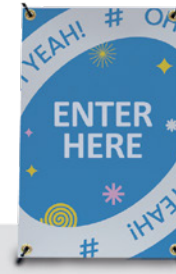
Deluxe Mini



Large Mini Promo



Economy



Mini X



EuroFit Mini

Mini Tabletop Displays

Item #	Description	1	2-5	6-11	12-24
262014	Deluxe Mini Kit	83.95	80.60	77.20	73.85
210242	Large Mini Promo Kit	72.65	69.75	66.85	63.95
261130	24" Tabletop Economy No-Curl Hybrid Media Kit	180.20	173.00	164.00	155.00
262160	24" Tabletop Economy No-Curl Opaque Fabric Kit	180.20	173.00	164.00	155.00
280370	EuroFit Mini Kit	109.00	104.60	100.30	95.90
210032	Mini X Banner Display Kit	41.80	40.13	38.46	36.78

Setup fee: \$20(G)

Pricing is subject to change.

USD MSRP (C)

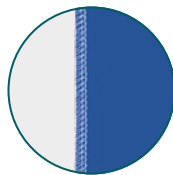
Production Lead Time: 2-4 days from final proof approval

MICRO GEOMETRIX DISPLAY

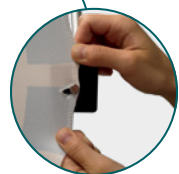


Create a variety of multidimensional displays in seconds with the Micro GeoMetrix display.

- Lightweight aluminum frame with plastic hubs
- Artwork is dye sublimated on polyester double knit
- Pegs hold up to three panels each



Graphic panels are finished with white stitching.



Buttonholes are reinforced with white stitching to prevent tearing.

Micro GeoMetrix Classic

Item #	Description	1	2-5	6-11	12-24
337207	Kit	573.50	550.50	527.50	504.50

Setup fee: \$20(G)

Pricing is subject to change.

Kit Includes: Nine-Quad Square Frame, 5 Graphic Panels and Soft Carry Case

USD MSRP (C)

Product Size	Finished Graphic Size	Product Wt.	Media
46"W x 46.75"H x 9.62"D	view online template	9.25 lbs.	polyester double knit

Production Lead Time: 4 days from final proof approval



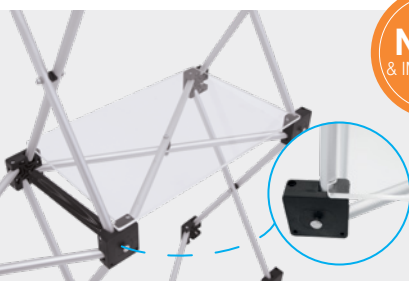
Add-On

Micro GeoMetrix Shelf

Item #	Description	1	2-5	6-11	12-24
338069	Internal Clear Shelf	50.45	48.45	46.43	44.41

Pricing is subject to change.

Each shelf supports up to 5 lbs. Shelf size 14.5"W x 9.25"D. Compatible with frames equipped with locking arms only. USD MSRP (C)



Shelf design ensures a better fit for faster, easier installation.



PRICES ARE SUBJECT TO CHANGE. No setup fee on orders placed via our website. Visit showdowndisplays.com for current pricing, graphic templates, product videos and assembly instructions.

showdowndisplays.com

STANDS & FURNITURE



Countertop folds in half for convenient storage.

COUNTERPOP



Combining the features of a counter and a pop-up display, the CounterPop is truly a multifunctional display.

- Available in three widths
- Artwork is dye sublimated on recycled polyester knit
- 100% recycled media is made with fibers recycled from plastic bottles
- Hook-and-loop fasteners make it easy to install graphic panels
- Countertop supports up to 30 lbs.; internal shelves support up to 10 lbs.

CounterPop

Item #	Description	1	2-5	6-11	12-24
256800	26" Kit	604.00	586.00	567.50	549.50
257055	42" Kit	697.00	676.00	655.50	634.50
256803	56" Kit	781.50	758.00	734.50	711.00

Setup fee: \$20(G)

Pricing is subject to change.

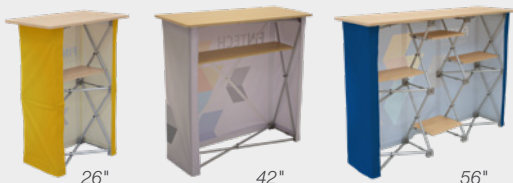
Kit Includes: Hardware, Graphic Panel and Soft Carry Case

USD MSRP (C)

Description	Product Size	Finished Graphic Size	Product Wt.	Media
26"	26"W x 40"H x 15.75"D	view online template	17 lbs.	recycled polyester knit
42"	41.75"W x 40"H x 15.75"D	view online template	22.25 lbs.	recycled polyester knit
56"	55.875"W x 40"H x 15.75"D	view online template	28 lbs.	recycled polyester knit

Production Lead Time: 4 days from final proof approval

Back View



MDF countertop and internal shelf with woodgrain laminate.



Graphic wrap is installed into the chair frame.

RETRO WEBBING CHAIR



Discover the perfect blend of retro style and modern comfort.

- Supports up to 250 lbs.
- Webbing and graphic wrap are made from polyester
- Powder-coated steel frame with solid wood armrests
- Folds flat for easy storage and transport
- Vibrant full-color imprint

Retro Webbing Chair

Item #	Description	1	2-5	6-11	12-24
ACH071	Front Imprint	130.00	123.40	117.20	107.60

Setup fee: \$20(G)

Pricing is subject to change.

Stock fabric colors with full-color artwork.

USD MSRP (C)

Product Size	Finished Graphic Size	Product Wt.	Media
22"W x 33.5"H x 16"D	view online template	8.5 lbs.	polyester

Production Lead Time: 7 days from final proof approval



Chair features one cupholder.

Stock Retro Webbing Chair Colors

- Crimson PMS 186
- Azure PMS 286
- Black

PMS colors are for reference only and may vary slightly from actual color.

PRICES ARE SUBJECT TO CHANGE. No setup fee on orders placed via our website. Visit showdowndisplays.com for current pricing, graphic templates, product videos and assembly instructions.

showdowndisplays.com

BLANKETS



Add extra coziness to any room with these snuggly soft blankets.

- Sherpa and Fleece artwork is dye sublimated on soft fleece fabric
- Single-sided
- Fleece unimprinted side is white; Sherpa unimprinted side is ivory
- Machine wash on cold gentle cycle and tumble dry, no heat

Fleece Blanket

Item #	Description	Product Wt.	1	2-5	6-11	12-24
281117	50" x 60"	1.3 lbs.	53.90	52.30	50.65	49.05
281118	60" x 80"	2.1 lbs.	74.10	71.85	69.65	67.40

Setup fee: \$20(G)

Pricing is subject to change.
USD MSRP (C)

Sherpa Blanket

Item #	Description	Product Wt.	1	2-5	6-11	12-24
281111	50" x 60"	2 lbs.	67.40	62.00	57.95	53.90
281112	60" x 80"	3.2 lbs.	87.60	80.55	75.30	70.05

Setup fee: \$20(G)

Pricing is subject to change.
USD MSRP (C)

Production Lead Time: 3 days from final proof approval



Sherpa blanket is finished with a whipped edge.



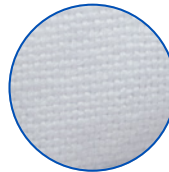
Fleece blanket is finished with a hemmed edge.

INDOOR PILLOWS



Instantly revitalize and add comfort to any space.

- Artwork is printed on durable textured polyester fabric
- Single- and double-sided options available
- Vacuum sealed poly-fill pillow insert included
- Zipper closure
- Pillow cover is machine-washable; wash on cold gentle cycle and tumble dry, no heat
- Assembly required; insert pillow into cover



Textured fabric gives style and depth to the pillow cover.



16" X 16"



18" X 18"

Indoor Pillows

Item #	Description	Product Wt.	1	2-5	6-11	12-24
281200	16" x 16" Single-Sided Kit	1.2 lbs.	47.15	45.74	44.32	42.91
281201	16" x 16" Double-Sided Kit	1.2 lbs.	53.90	52.30	50.65	49.05
281202	18" x 18" Single-Sided Kit	1.4 lbs.	53.90	52.30	50.65	49.05
281203	18" x 18" Double-Sided Kit	1.4 lbs.	60.60	58.80	56.95	55.15

Setup fee: \$20(G)

Pricing is subject to change.

Kit Includes: Pillow Graphic Cover and Separate Vacuum Sealed Poly-Fill Insert USD MSRP (C)

Production Lead Time: 2 days from final proof approval



Pillows feature a zipper closure.



The reverse side of single-sided pillows is white.

ALUMINUM PRINTS



Make your art shine with a sleek and modern aluminum print.

- Scratch-resistant for long-term use
- Print is single-sided with a white base coat that makes colors pop
- No assembly required

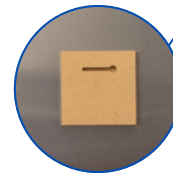
Aluminum Prints with Shadow Mount

Item #	Description	Product Wt.	1	2-5	6-11	12-24
264225	10" x 20"	0.95 lb.	45.12	43.77	42.41	41.06
264211	16" x 16"	0.9 lb.	61.65	59.80	57.95	56.10
264219	24" x 36"	4 lbs.	277.00	268.75	260.25	252.00

Setup fee: \$20(G)

Pricing is subject to change.
USD MSRP (C)

Production Lead Time: 2 days from final proof approval



Hidden shadow mount hardware lets you hang your art on the wall like a picture frame.



Finished with rounded corners.

16" X 16"

PRICES ARE SUBJECT TO CHANGE. No setup fee on orders placed via our website. Visit showdowndisplays.com for current pricing, graphic templates, product videos and assembly instructions.

Sign Pro
signprofargo.com

2220 2nd Avenue East • West Fargo, ND 58078
(701) 461-7309